



PAROS
PAROS PRO

EXERCISE BIKE OWNER'S MANUAL



IMPORTANT PRECAUTIONS

SAVE THESE INSTRUCTIONS

Read all instructions before using this bike. When using an electrical product, basic precautions should always be followed, including the following: Read all instructions before using this bike. It is the responsibility of the owner to ensure that all users of this bike are adequately informed of all warnings and precautions.

WARNING

To reduce the risk of burns, fire, electrical shock or injury to persons:

- If you experience chest pains, nausea, dizziness, or shortness of breath, stop exercising immediately and consult your physician before continuing.
- Maintain a comfortable pace. Do not sprint above 80 rpms on this machine.
- To maintain balance, it is recommended to keep a grip on the handlebars while exercising, mounting or dismounting the machine.
- Do not wear clothes that might catch on any part of the bike.
- Do not turn pedal arms by hand.
- Make sure handlebars are secure before each use.
- Do not insert or drop any object into any opening.
- Unplug bike before moving or cleaning it. To clean, wipe surfaces down with soap and slightly damp cloth only; never use solvents. (See MAINTENANCE)
- This bike should not be used by persons weighing more than 136kg Failure to comply will void the warranty.
- The exerciser complies with the EN957-1/-5 standard, class of exerciser:HA; braking system is adjustable.
- This bike is intended for in-home use only. Do not use this bike in any commercial, rental, school or institutional setting. Failure to comply will void the warranty.
- Do not use bike in garages, porches, pool rooms, bathrooms, car ports or outdoors. Failure to comply this may void the warranty.
- Use the bike only as described in this manual.



At NO time should pets or children under the age of 12 be closer to the bike than 10 feet.
At NO time should children under the age of 12 use the bike.
Children over the age of 12 should not use the bike without adult supervision.

It is essential that your bike is used only indoors, in a climate controlled room. If your bike has been exposed to colder temperatures or high moisture climates, it is strongly recommended that the bike is warmed up to room before first time use. Failure to do so may cause premature electronic failure.



PAROS
PAROS PRO



PAROS
PAROS PRO

BEFORE YOU BEGIN

CONGRATULATIONS! on choosing your bike. You've taken an important step in developing and sustaining an exercise program! Your bike is a tremendously effective tool for achieving your personal fitness goals. Regular use of your bike can improve the quality of your life in so many ways.

HERE ARE JUST A FEW OF THE HEALTH BENEFITS OF EXERCISE:

- Weight Loss
- A Healthier Heart
- Improved Muscle Tone
- Increased Daily Energy Levels

The key to reaping these benefits is to develop an exercise habit. Your new bike will help you eliminate obstacles that prevent you from exercising. Inclement weather and darkness won't interfere with your workout when you use your bike in the comfort of your home. This guide provides you with basic information for using and enjoying your new machine.

LOCATION OF THE BIKE

Place the bike on a level and stable surface. There should be 6 feet of clearance behind the bike, 3 feet on each side and one foot in front for the power cord (See diagram to the right). Do not place the bike in any area that will block any vent or air openings. The bike should not be located in a garage, covered patio, near water or outdoors.

ASSEMBLY



WARNING

There are several areas during the assembly process that special attention must be paid. It is very important to follow the assembly instructions correctly and to make sure all parts are firmly tightened. If the assembly instructions are not followed correctly, the fitness bike could have frame parts that are not tightened and will seem loose and may cause irritating noises. To prevent damage to the fitness bike, the assembly instructions must be reviewed and corrective actions should be taken.

Before proceeding, find your bike's serial number located on the front stabilizer tube and enter it in the space provided below. Also locate the model name which is next to the serial number.

ENTER YOUR SERIAL NUMBER AND MODEL NAME IN THE BOXES BELOW:

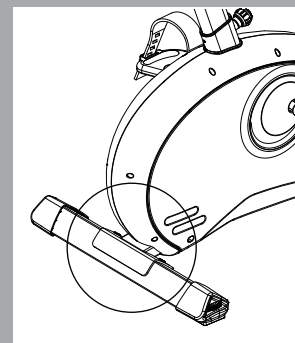
SERIAL NUMBER:

--	--	--	--	--	--	--	--	--	--	--	--	--	--	--

MODEL NAME: **HORIZON**

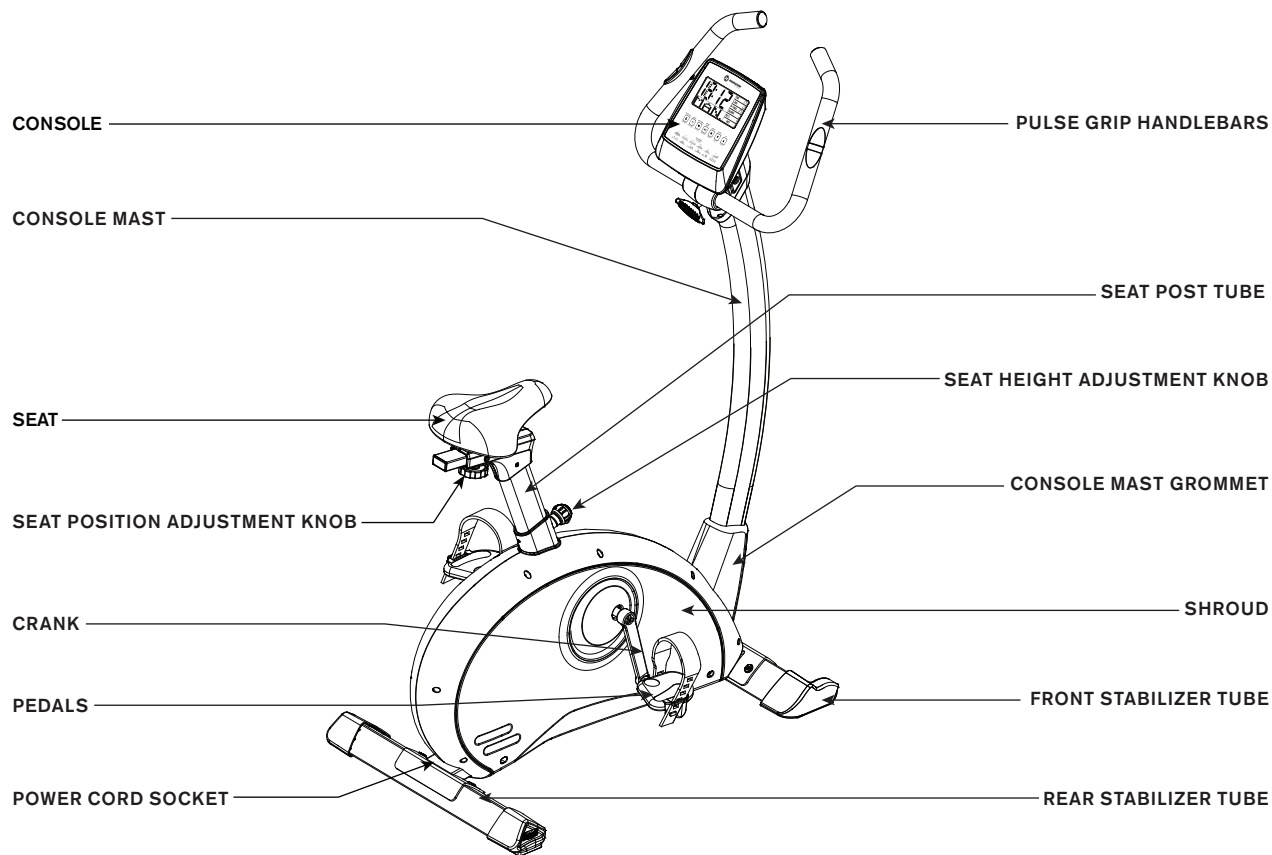
--	--	--	--	--	--	--	--	--	--	--	--	--	--	--

BIKE





PAROS PRO
SHOWN



PAROS PRO

TOOLS INCLUDED:

- ☐ 5mm L Wrench
- ☐ Flat Wrench

PARTS INCLUDED:

- ☐ 1 Main Frame
- ☐ 1 Front Stabilizer Tube
- ☐ 1 Rear Stabilizer Tube
- ☐ 1 Console
- ☐ 1 Console Mast
- ☐ 1 Console Mast Grommet
- ☐ 1 Handlebar
- ☐ 1 Left & Right Handlebar Covers
- ☐ 1 Seat
- ☐ 1 Seat Post
- ☐ 2 Pedals with Straps
- ☐ 1 Power Cord
- ☐ 1 Hardware Kit

PRE ASSEMBLY

UNPACKING

Unpack the product where you will be using it. Place the carton on a level flat surface. It is recommended that you place a protective covering on your floor. Never open box when it is on its side.

NOTE: During each assembly step, ensure that ALL nuts and bolts are in place and partially threaded in before completely tightening any ONE bolt.

NOTE: A light application of grease may aid in the installation of hardware. Any grease, such as lithium bike grease is recommended.



NEED HELP?

If you have questions or if there are any missing parts, contact your local dealer.

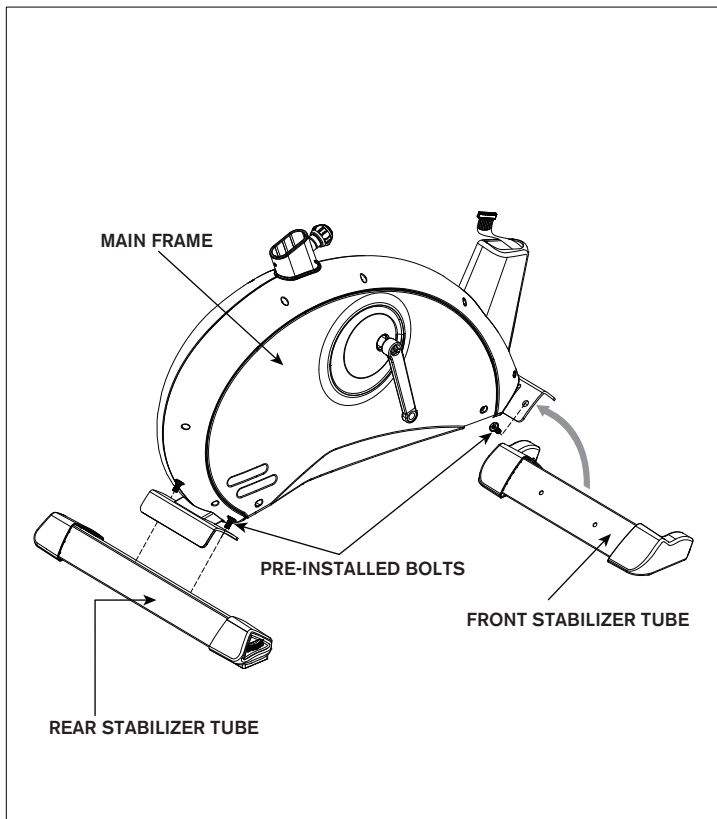


PAROS
PAROS PRO

ASSEMBLY STEP 1



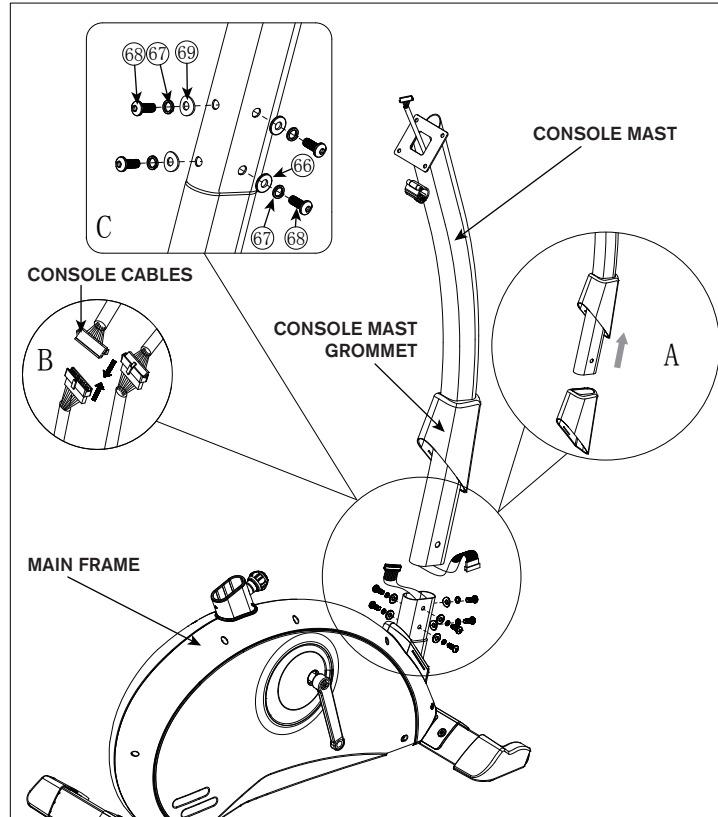
PAROS
PAROS PRO



NOTE: There is no hardware for this step.


- A Attach the **REAR STABILIZER TUBE** to **MAIN FRAME** using 2 **PRE-INSTALLED BOLTS**.
- B Attach the **FRONT STABILIZER TUBE** to **MAIN FRAME** using 2 **PRE-INSTALLED BOLTS**.


ASSEMBLY STEP 2




HARDWARE PARTS:

 **BOLT (68)**
M8 x 15
Qty: 6

 **SPRING WASHER (67)**
Ø8
Qty: 6

 **ARC WASHER (69)**
Ø8 x Ø19 x 1.5T
Qty: 2

 **FLAT WASHER (66)**
Ø8 x Ø19 x 1.5T
Qty: 4

- A Slide **CONSOLE MAST GROMMET** from bottom up the **CONSOLE MAST**.
- B Attach **CONSOLE CABLES** and tuck cables into **MAIN FRAME** carefully.
- C Slide **CONSOLE MAST** into **MAIN FRAME** using 4 **BOLTS (68)**, 4 **SPRING WASHERS (67)**, 4 **FLAT WASHERS (66)** from both sides and 2 **BOLTS (68)**, 2 **SPRING WASHERS (67)**, 2 **ARC WASHERS (69)** from front side.
- D Slide **CONSOLE MAST GROMMET** down over **MAIN FRAME**.

NOTE: Be careful not to pinch any wires while attaching the console mast.

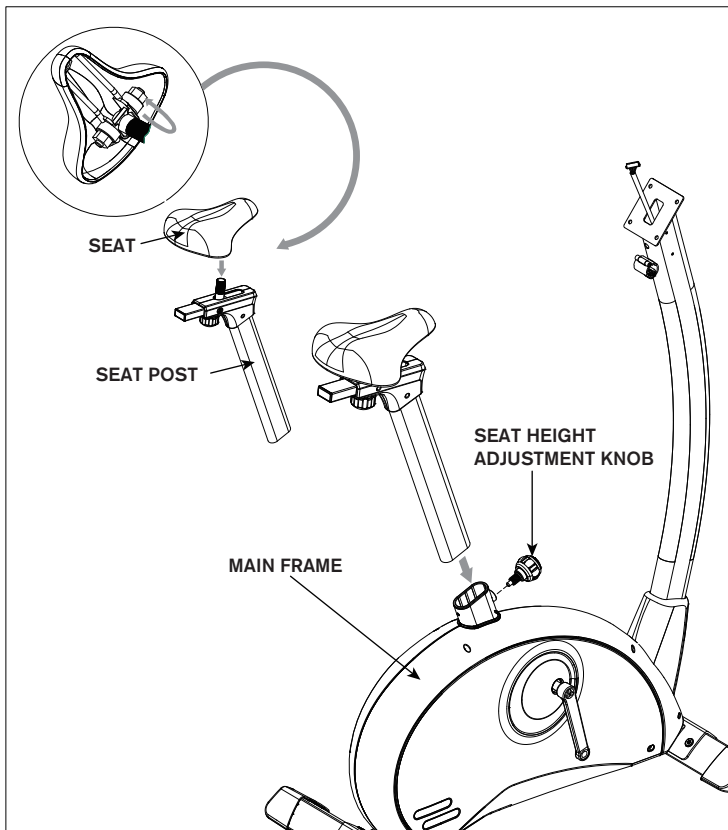


PAROS
PAROS PRO

ASSEMBLY STEP 3



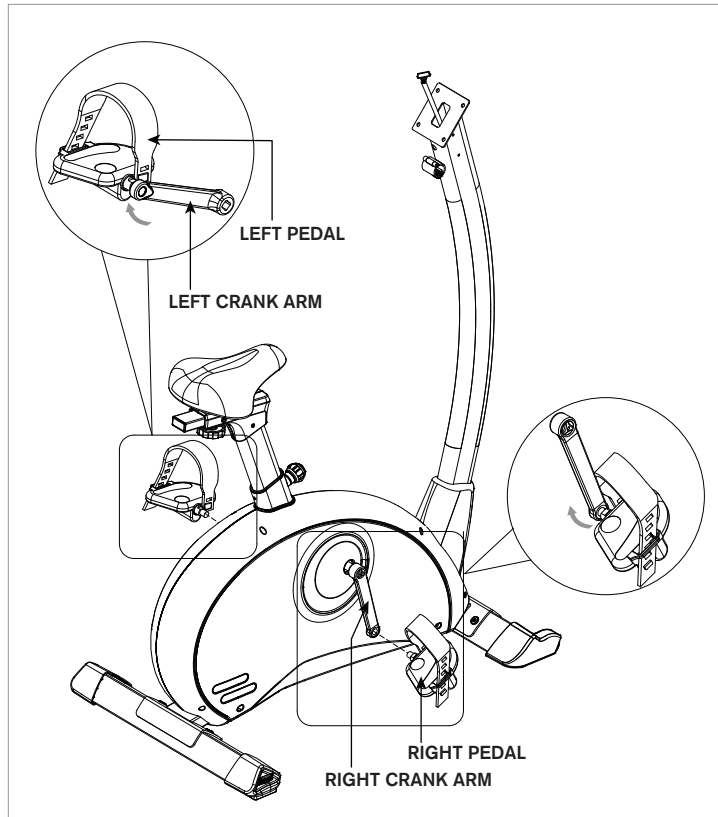
PAROS
PAROS PRO



NOTE: There is no hardware for this step.

- A Attach **SEAT** to **SEAT POST**.
- B Pull the **SEAT HEIGHT ADJUSTMENT KNOB** outward while sliding the **SEAT POST** into **MAIN FRAME**.

ASSEMBLY STEP 4



NOTE: There is no hardware for this step.

- A Attach the **RIGHT PEDAL** to the **RIGHT CRANK ARM**, tightening it **CLOCKWISE** with the provided flat wrench.
- B Attach the **LEFT PEDAL** to the **LEFT CRANK ARM**, tightening it **COUNTER-CLOCKWISE** with the provided flat wrench.

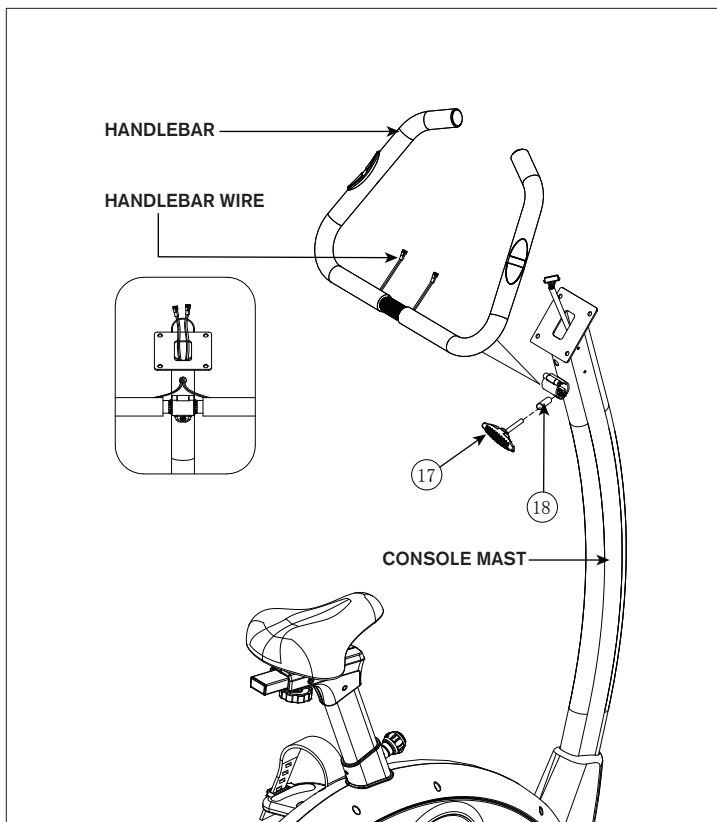


PAROS
PAROS PRO

ASSEMBLY STEP 5



PAROS
PAROS PRO



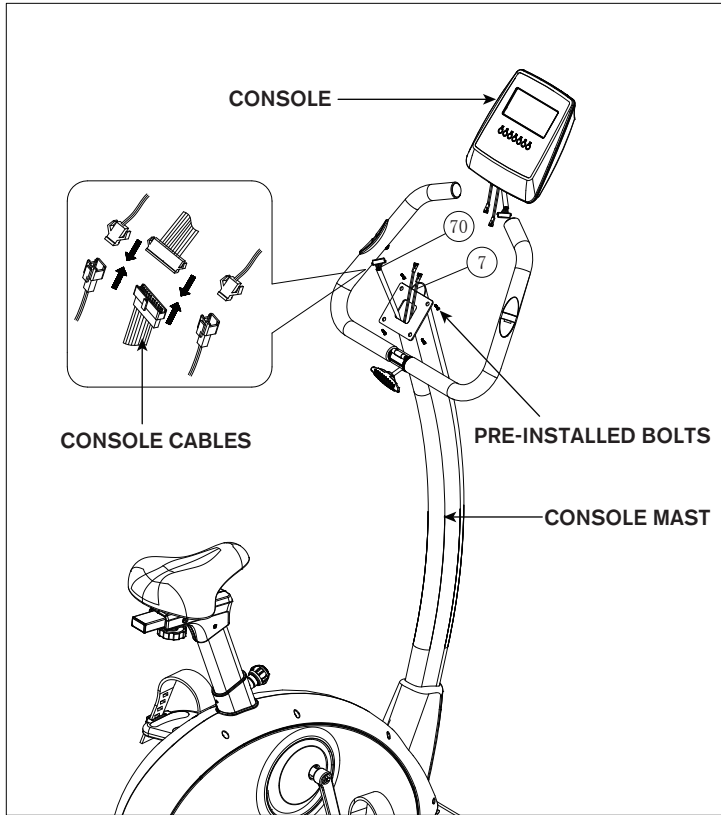
HARDWARE PARTS:

T KNOB (17)
M8 x 55mm
Qty: 1

BUSHING (18)
Ø8 x Ø13 x 35mm
Qty: 1

- A Feed the **HANDLEBAR WIRES** through the hole in the **CONSOLE MAST** and out the top of the **CONSOLE MAST**.
- B Attach the **HANDLEBAR** to **CONSOLE MAST** using 1 **BUSHING (18)** and 1 **T KNOB (17)**.

ASSEMBLY STEP 6



NOTE: There is no hardware for this step.

- A** Connect the **CONSOLE CABLES** and carefully tuck the **CONSOLE CABLES** into the **CONSOLE MAST**.
- B** Attach the **CONSOLE** to the **CONSOLE MAST** using 4 **PRE-INSTALLED BOLTS**.

NOTE: Be careful not to pinch any wires while attaching the console.

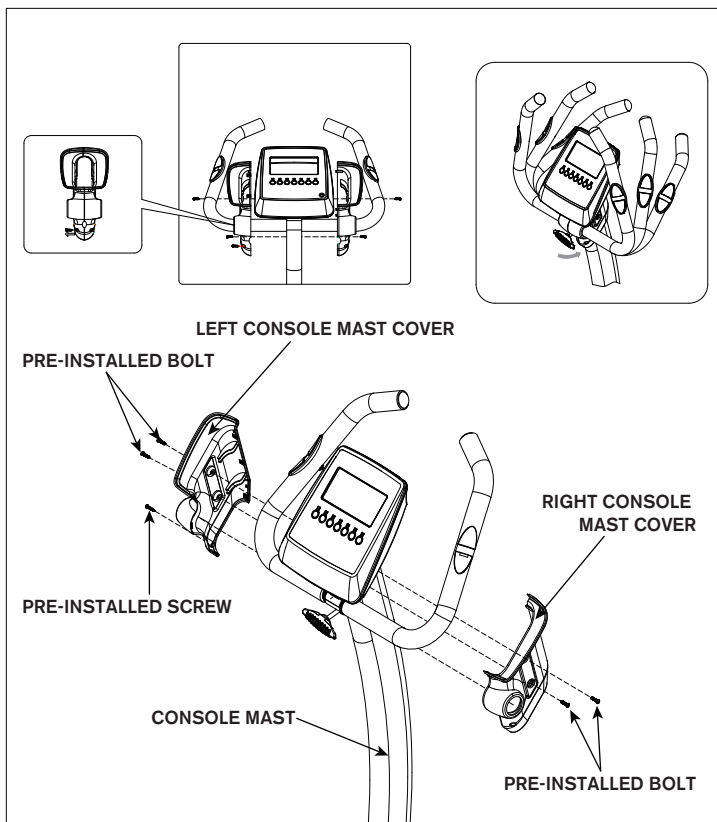


PAROS
PAROS PRO

ASSEMBLY STEP 7



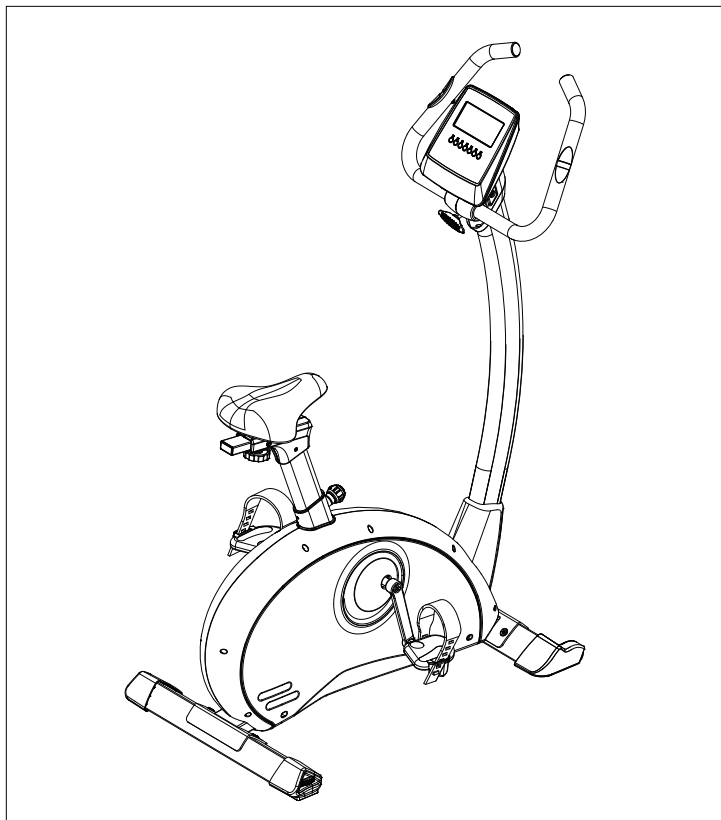
PAROS
PAROS PRO



NOTE: There is no hardware for this step.

- A Attach the **LEFT & RIGHT CONSOLE MAST COVERS** to the **CONSOLE MAST** using 4 **PRE-INSTALLED BOLTS** and 1 **PRE-INSTALLED SCREWS**.
- B Plug in **POWER ADAPTER**.

ASSEMBLY STEP 8



ASSEMBLY COMPLETE!

PAROS & PAROS PRO

Max. User Weight: 136 kg / 300 lbs

Product Weight: 31kg / 68 lbs

Overall Dimensions: 103 x 60 x 135 cm / 41" x 23" x 53"



PAROS PRO
SHOWN



BIKE OPERATION

ADJUSTING THE SEAT

To adjust the seat by rotating the knob and loosen the screw. Pull out the knob and adjust the seat to a comfortable pedaling position (one that keeps a slight bend in your knee while your legs are in the extended position). Lock the screw by rotating knob clockwise until it tightens.

NOTE: It is recommended that you do not sit on the seat while adjusting its position.

ADJUSTING THE HANDLEBAR

To adjust the handlebar by rotating the knob and loosen the screw. Then, pull out the knob and adjust the handlebar to a position you prefer. Lock the screw by rotating knob clockwise until it tightens.

WARNING

Do not operate the bike if the adaptor is damaged. If the bike appears to not be working properly, do not use the bike.

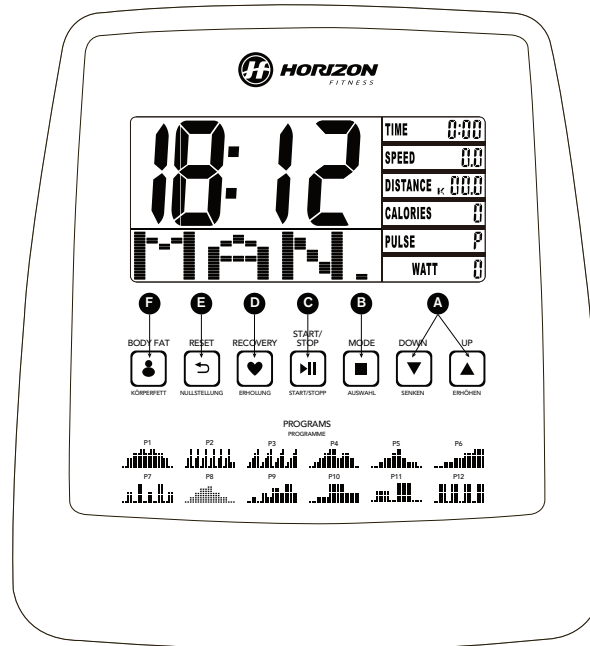
WARNING

Our bikes are well built and heavy! Use care and additional help if necessary when moving.

PAROS CONSOLE DISPLAY



PAROS PRO CONSOLE DISPLAY



PAROS
PAROS PRO



PAROS
PAROS PRO

PAROS & PAROS PRO CONSOLE OPERATION

A) UP/DOWN KEY

- 1) Press to increase and decrease the value.
- 2) Press to scroll and browse items which you can select.
- 3) Press to increase and decrease the resistance.

B) MODE KEY

- 1) Changing display and confirm data setting .
- 2) After Body Fat testing press Mode key to change display.

C) START/STOP KEY

To start and pause a workout.

D) RECOVERY KEY

If heart rate data is available, you can press Recovery key to start the Recovery function.(Refer to Recovery operation on page 19 for more information)

E) RESET KEY

When data setting, press Reset key to default value.

Hold the Reset key for 3 seconds to reset the system at anytime during workout.

F) BODY FAT

For evaluating body fat and BMI index. (Refer to page 19 for more operation information)

SETUP YOUR PERSONAL DATA

This console is able to store your personal data which includes name, gender, age and weight. This allows you to start your workout more quickly. To set up your data, please follow the procedure as below,

- 1) Select user from 1 to 4
- 2) Select your gender
- 3) Select your age
- 4) Select your weight
- 5) The console is able to store up to 4 users' data and you may modify your setting before your daily workouts.

START YOUR WORKOUT

- 1) Make sure the power is on.
- 2) Press Mode key to enter main menu after finish user setting.
- 3) Press Up/Down key to select workout in main menu, then press mode key to confirm.
- 4) To choose preset programs please select program and press mode key.
- 5) After workout selection, press Up/Down key to set the workout time.
- 6) Press Start key to start the workout.

QUICK START

- 1) Make sure the power is on.
- 2) Simply press the "START" key and begin exercising.

MANUAL

Select manual at main menu and press start before workout selection.

HRC

- 1) finish personal data setting and enter main menu.
- 2) select HRC program at main menu and press mode key to enter setting.
- 3) select among 55%, 75% and 90% target or choose H.R.C. Target to set your desired number between 30 to 230.

USER PROGRAM

- 1) select User program at main menu and use up/down and mode key to set your own workout.
- 2) press mode key for 3 seconds for confirming setting

WORKOUT RECOVERY

After exercising for a period of time (more than 30 seconds), Press RECOVERY key, hold onto the handgrips to conduct a workout recovery test.

TIME will count down from 00:60 to 00:00 and then show your heart rate recovery status from F1,F2....to F6.

(F1-F6 stands for your Fitness quotient, with F1 being the best result)

User may keep exercising to improve the heart rate recovery status. (Press the RECOVERY button again to return the main display)

BODY FAT MEASUREMENT

- 1) Select User from U1 - U4 & workout then press START key.

- 2) After the selected workout is finished or stopped, press BODY FAT button to enter.

- 3) Holding both pulse grips for 8-10 seconds then test results (percentage and BMI rate) will be displayed on LCD for 30 seconds.

B.M.I. (Body mass index) integrated

B.M.I	LOW	LOW/MED	MEDIUM	MED/HIGH
RANGE	<20	20-24	24.1-26.5	>26.5

BODY FAT:

FAT%	(-) LOW	(+) LOW/MED	▲ MEDIUM	◆ MED/HIGH
MALE	<13%	13%-25.9%	26%-30%	>30%
FEMALE	<23%	23%-35.9%	36%-40%	>40%

WATTS CONTROL (PAROS PRO ONLY)

- 1) Finish user setting and enter workout selection.
- 2) Select Watts control program at main menu and press mode key.
- 3) Set target watt value by using up/down key.
- 4) Press start after finish setting.

ENERGY SAVER

To minimize energy consumption, your machine will enter energy saver mode automatically when not in use for 4 minutes and could be quickly activated again with a touch of a button.

CALENDAR AND TIME

While powering on, this console will allow you to set the CALENDAR and TIME by using UP & DOWN keys and MODE key to confirm.



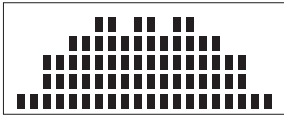
PAROS
PAROS PRO

PAROS & PAROS PRO PRESET PROGRAM PROFILES

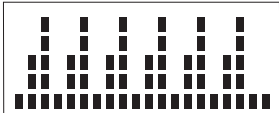


PAROS PRO

- **P1:** Promotes weight loss by raising and lowering the resistance level, while keeping you in your fat burning zone.



- **P2:** Improves your strength, speed, and endurance by raising and lowering the resistance levels throughout your workout to involve both your heart and muscles.



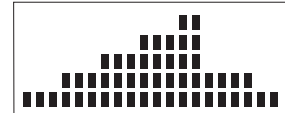
- **P3:** Challenges with various combinations of hills and valleys (resistance) to burn more fat when exercising.



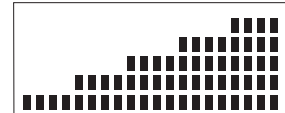
- **P4:** Improves performance and stamina by raising the resistance level to high peaks to simulate the most difficult outdoor terrains.



- **P5:** Complete exercise program to help you enhance body performance.

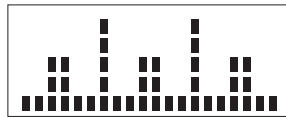


- **P6:** Increasing resistance for advanced users to tone your muscles, and challenges yourself.



PRESET PROGRAM PROFILES (PAROS PRO ONLY)

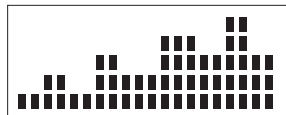
- **P7:** Recover your heart and muscles after intensive workout.



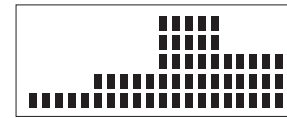
- **P8:** Simulates plateau hiking by increasing and decreasing the resistance gradually.



- **P9:** Gradually increasing resistance with hills and valleys allows user to reach their daily target.



- **P10:** Improves performance and stamina by raising the resistance level to high peaks to simulate the hill environment.



- **P11:** Improve heart and lung capacity by simulates daily jogging.



- **P12:** Improves your strength, speed and endurance by automatically changing the resistance levels through-out your workout.



PAROS
PAROS PRO

MONITORING YOUR HEART RATE



PAROS
PAROS PRO

FEEDBACK

Your Horizon Fitness bike offers two heart rate feedback options. You may choose to use the heart rate handlebars, or the chest transmitter (sold separately) for a hands free workout.

HEART RATE HANDLEBAR

Place the palm of your hands directly on the heart rate handlebars. Both hands must grip the bars for your heart rate to register. When gripping the handlebars, do not grip tightly. Holding the grips tightly may elevate your blood pressure. Try to maintain moderate pressure while holding onto the heart rate handlebars. It is recommended that you hold the handlebars only long enough to see your heart rate readout on the console. You may experience an erratic readout if consistently holding the handlebars.

TELEMETRIC CHEST TRANSMITTER (SOLD SEPARATELY)

Prior to wearing the chest transmitter (sold separately) on your chest, moisten the two rubber electrodes with water. Center the chest strap just below the breast or pectoral muscles, directly over your sternum, with the Horizon Fitness logo facing out. NOTE: The chest strap must be tight and properly placed to receive an accurate and consistent readout. If the chest strap is too loose, or positioned improperly, you may receive an erratic or inconsistent heart rate readout.

WARNING!

The heart rate reading is intended only as an exercise aid and not for medical purpose. Your heart rate monitoring systems may be inaccurate. Various factors may affect the accuracy of your heart rate reading. Over exercise may result in serious injury or death. If you feel faint stop exercise immediately.

CONDITIONING GUIDELINES

ALWAYS CONSULT YOUR PHYSICIAN BEFORE BEGINNING AN EXERCISE PROGRAM.

HOW OFTEN? (FREQUENCY OF WORKOUTS)

The American Heart Association recommends that you exercise at least 3 to 4 days per week to maintain cardiovascular fitness. If you have other goals such as weight or fat loss, you will achieve your goal faster with more frequent exercise. Whether it's 3 days or 6 days, remember that your ultimate goal should be to make exercise a lifetime habit. Many people are successful staying with a fitness program if they set aside a specific time of day to exercise. It doesn't matter whether it's in the morning before breakfast, during lunch hour or while watching the evening news. What's more important is that it's a time that allows you to keep a schedule, and a time when you won't be interrupted. To be successful with your fitness program, you have to make it a priority in your life. So decide on a time, pull out your day planner and pencil in your exercise times for the next month!

HOW LONG? (DURATION OF WORKOUTS)

For aerobic exercise benefits, it's recommended that you exercise from between 24 and 60 minutes per session. But start slowly and gradually increase your exercise times. If you've been sedentary during the past year, it may be a good idea to keep your exercise times to as little as five minutes initially. Your body will need time to adjust to the new activity. If your goal is weight loss, a longer exercise session at lower intensities has been found to be most effective. A workout time of 48 minutes or more is recommended for best weight loss results.

HOW HARD? (INTENSITY OF WORKOUTS)

How hard you workout is also determined by your goals. If you use your machine to prepare for a 5K workout, you will probably work out at a higher intensity than if your goal is general fitness. Regardless of your long term goals, always begin an exercise program at low intensity. Aerobic exercise does not have to be painful to be beneficial!



PAROS
PAROS PRO



PAROS
PAROS PRO

MAINTENANCE

WHAT KIND OF ROUTINE MAINTENANCE IS REQUIRED?

We use sealed bearings throughout our bikes so lubrication is not needed. The most important maintenance step is to simply wipe your perspiration off the trainer after each use.

HOW DO I CLEAN MY BIKE?

Clean with soap and water cleaners only. Never use solvents on plastic parts.

Cleanliness of your bike and its operating environment will keep maintenance problems and service calls to a minimum. For this reason, Horizon Fitness recommends that the following preventive maintenance schedule be followed.

AFTER EACH USE (DAILY)

Turn off the bike by unplugging the power cord from the wall outlet

- Wipe down the bike with a damp cloth. Never use solvents, as they can cause damage to the bike.
- Inspect the power cord. If the power cord is damaged, contact Horizon Fitness.
- Make sure the power cord is not underneath the bike or in any other area where it can become pinched or cut.

NOTE:

The safety level of the equipment can be maintained only if it is examined regularly for damage and wear, e.g. connection parts. If any deterioration is observed, immediately replace all faulty parts and do not use until it is repaired.



WARNING

To remove power from the bike, the power cord must be disconnected from the wall outlet.

WEEKLY

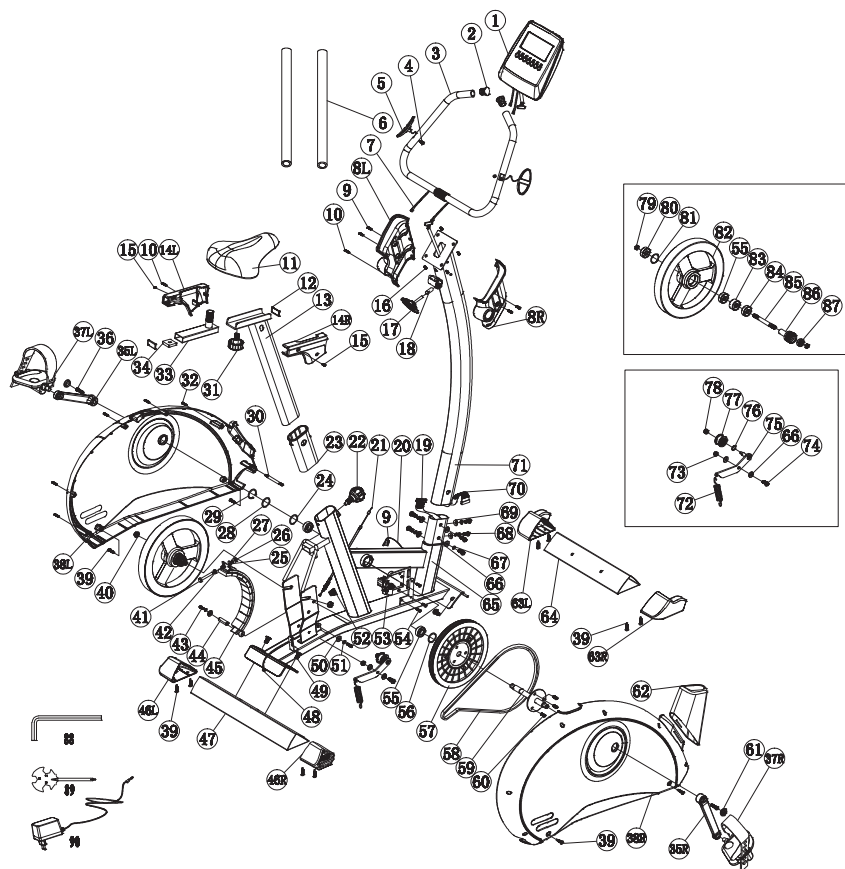
Clean underneath the bike, following these steps:

- Turn off the bike.
- Move the bike to a remote location.
- Wipe or vacuum any dust particles or other objects that may have accumulated underneath the bike.
- Return the bike to its previous position.

EVERY MONTH

- Inspect all assembly bolts and pedals on the machine for proper tightness.

PAROS EXPLODED VIEW



PAROS PARTS LIST

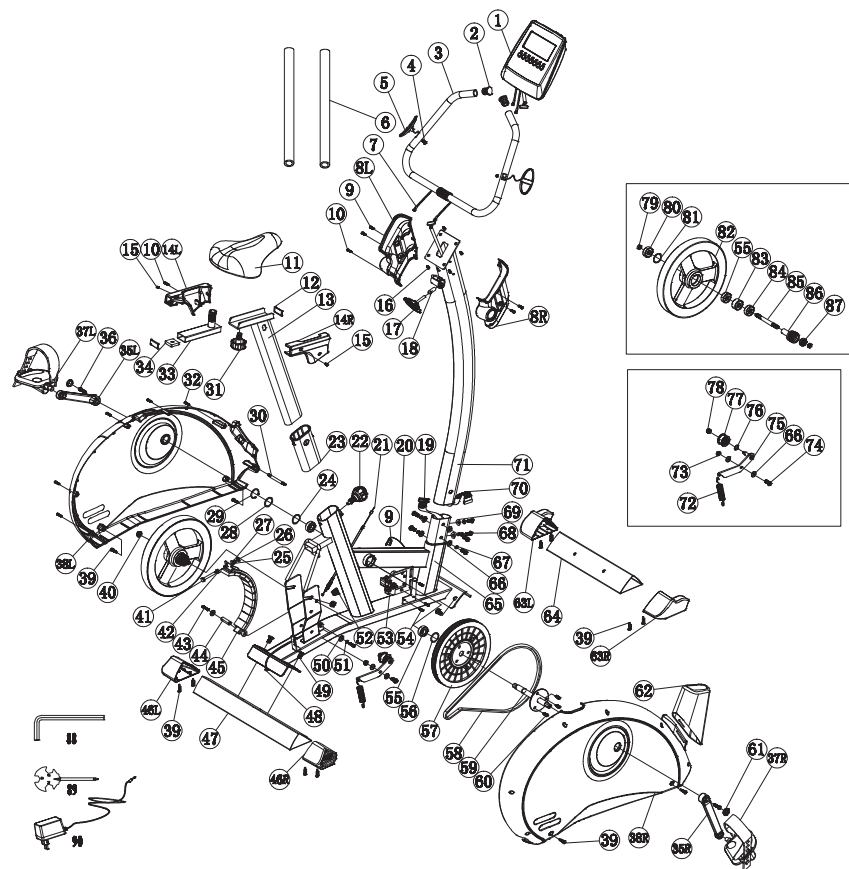
NO.	DESCRIPTION
1	COMPUTER
2	END CAP FOR FIXED HANDLEBAR
3	HANDLEBAR
4	M3.5*20 SELF-TAPING SCREW
5	HANDLE PULSE PAD
6	HANDLEBAR SPONGE
7	HANDLE PULSE CABLE
8L	COMPUTER PLASTIC COVER LEFT
8R	COMPUTER PLASTIC COVER RIGHT
9	M5X12MM BLACK SCREW
10	M4X15MM SELF-TAPING SCREW
11	SADDLE(SB-27)
12	END CAP
13	SEAT POST
14L	SEAT PLASTIC COVER LEFT
14R	SEAT PLASTIC COVER RIGHT
15	SCREW FOR SLIDE SEAT
16	M5X12MM NICKEL PLATING SCREW FOR COMPUTER
17	T SHARP KNOB(LD15)
18	TUBE SPACER
19	LOWER COMPUTER CABLE
20	SENSOR
21	OUT CABLE
22	ROUND HEAD PULL PIN
23	INNER PLASTIC COVER

NO.	DESCRIPTION
24	Φ17XΦ22X1T WASHER
25	Φ6.5XΦ25X1T PLASTIC WASHER
26	M6 NUT
27	Φ6.5XΦ19X1.5T WASHER
28	Φ17.5XΦ22X0.5T CURVED WASHER
29	JUMP RING
30	CONNECTING LINK
31	SEAT HIGH ADJUSTABLE KNOB
32	M4.5X25MM SELF-TAPING SCREW
33	SLIPING TUBE
34	SLIPING TUBE FIXED NUT
35L	CRANK LEFT
35R	CRANK RIGHT
36	HEXAGON BOLT
37L	FOOTPLATE LEFT
37R	FOOTPLATE RIGHT
38L	CHAIN COVER LEFT
38R	CHAIN COVER RIGHT
39	M5X15MM SCREVV
40	M10XP1.25 NUT
41	ALLEN BOLT
42	M6 HEX NUT
43	HEXAGON BOLT
44	FLYWHEELCOMPLETE MANDRIL
45	FLYWHEEL COMPLETE

NO.	DESCRIPTION
46L	REAR STABILIZER BAR END CAP LEFT
46R	REAR STABILIZER BAR END CAP RIGHT
47	REAR STABILIZER BAR
48	DC CABLE
49	FLAT HEAD HEXAGON BOLT
50	Φ6XΦ13X1.5T FLAT WASHER
51	SPRING WASHER
52	TAPER SPRING
53	MOTOR
54	M5X15MM SCREW
55	6003 2RS BEARING
56	Φ17XΦ22X2T WASHER
57	Φ240 BELT WHEEL
58	BELT
59	PEDAL AXLE
60	M8X15MM BLACK ALLEN BOLT
61	CRANK END CAP
62	MAIN POST PLASTIC COVER
63L	FRONT STABILIZER END CAP LEFT
63R	FRONT STABILIZER END CAP RIGHT
64	FRONT STABILIZER BAR
65	MAIN FRAME
66	Φ8XΦ19X1.5T FLAT WASHER
67	Φ8 SPRING WASHER
68	M8X15MM NICKEL PLATING ALLEN BOLT

NO.	DESCRIPTION
69	Φ8XΦ19X1.5T CURVED WASHER
70	UPPER COMPUTER CABLE
71	MAIN POST
72	Φ2.0X28 BLACK SPRING
73	M8X5T WHITE ZINC HEX NUT
74	M8X20 ALLEN BOLT
75	AXLE FOR IDLER
76	CURVED WASHER
77	IDLER
78	M8 NICKEL PLATING NUT
79	M10X4TXP1.25 HEX NUT
80	6300 2RS BEARING
81	Φ30XΦ34X1T WASHER
82	Φ280 MAGNETIC FLYWHEEL
83	ONE DIRECTION BEARING
84	6203 2RS BEARING
85	FLYWHEEL MANDRIL
86	SMALL RATCHET WHEEL
87	6000 2RS BEARING
88	ALLEN KEY WRENCH
89	COMBINATION WRENCH
90	ADAPTOR

PAROS PRO EXPLODED VIEW



PAROS PRO PARTS LIST

NO.	DESCRIPTION
1	COMPUTER
2	END CAP FOR FIXED HANDLEBAR
3	HANDLEBAR
4	M3.5*20 SELF-TAPING SCREW
5	HANDLE PULSE PAD
6	HANDLEBAR SPONGE
7	HANDLE PULSE CABLE
8L	COMPUTER PLASTIC COVER LEFT
8R	COMPUTER PLASTIC COVER RIGHT
9	M5X12MM BLACK SCREW
10	M4X15MM SELF-TAPING SCREW
11	SADDLE(SB-27)
12	END CAP
13	SEAT POST
14L	SEAT PLASTIC COVER LEFT
14R	SEAT PLASTIC COVER RIGHT
15	SCREW FOR SLIDE SEAT
16	M5X12MM NICKEL PLATING SCREW FOR COMPUTER
17	T SHARP KNOB(LD15)
18	TUBE SPACER
19	LOWER COMPUTER CABLE
20	SENSOR
21	OUT CABLE
22	ROUND HEAD PULL PIN
23	INNER PLASTIC COVER

NO.	DESCRIPTION
24	Φ17XΦ22X1T WASHER
25	Φ6.5XΦ25X1T PLASTIC WASHER
26	M6 NUT
27	Φ6.5XΦ19X1.5T WASHER
28	Φ17.5XΦ22X0.5T CURVED WASHER
29	JUMP RING
30	CONNECTING LINK
31	SEAT HIGH ADJUSTABLE KNOB
32	M4.5X25MM SELF-TAPING SCREW
33	SLIPING TUBE
34	SLIPING TUBE FIXED NUT
35L	CRANK LEFT
35R	CRANK RIGHT
36	HEXAGON BOLT
37L	FOOTPLATE LEFT
37R	FOOTPLATE RIGHT
38L	CHAIN COVER LEFT
38R	CHAIN COVER RIGHT
39	M5X15MM SCREVV
40	M10XP1.25 NUT
41	ALLEN BOLT
42	M6 HEX NUT
43	HEXAGON BOLT
44	FLYWHEELCOMPLETE MANDRIL
45	FLYWHEEL COMPLETE

NO.	DESCRIPTION
46L	REAR STABILIZER BAR END CAP LEFT
46R	REAR STABILIZER BAR END CAP RIGHT
47	REAR STABILIZER BAR
48	DC CABLE
49	FLAT HEAD HEXAGON BOLT
50	Φ6XΦ13X1.5T FLAT WASHER
51	SPRING WASHER
52	TAPER SPRING
53	MOTOR
54	M5X15MM SCREW
55	6003 2RS BEARING
56	Φ17XΦ22X2T WASHER
57	Φ240 BELT WHEEL
58	BELT
59	PEDAL AXLE
60	M8X15MM BLACK ALLEN BOLT
61	CRANK END CAP
62	MAIN POST PLASTIC COVER
63L	FRONT STABILIZER END CAP LEFT
63R	FRONT STABILIZER END CAP RIGHT
64	FRONT STABILIZER BAR
65	MAIN FRAME
66	Φ8XΦ19X1.5T FLAT WASHER
67	Φ8 SPRING WASHER
68	M8X15MM NICKEL PLATING ALLEN BOLT

NO.	DESCRIPTION
69	Φ8XΦ19X1.5T CURVED WASHER
70	UPPER COMPUTER CABLE
71	MAIN POST
72	Φ2.0X28 BLACK SPRING
73	M8X5T WHITE ZINC HEX NUT
74	M8X20 ALLEN BOLT
75	AXLE FOR IDLER
76	CURVED WASHER
77	IDLER
78	M8 NICKEL PLATING NUT
79	M10X4TXP1.25 HEX NUT
80	6300 2RS BEARING
81	Φ30XΦ34X1T WASHER
82	Φ280 MAGNETIC FLYWHEEL
83	ONE DIRECTION BEARING
84	6203 2RS BEARING
85	FLYWHEEL MANDRIL
86	SMALL RATCHET WHEEL
87	6000 2RS BEARING
88	ALLEN KEY WRENCH
89	COMBINATION WRENCH
90	ADAPTOR

D: Entsorgungshinweis

Vision Fitness / Horizon Fitness / TEMPO Fitness / TREO Fitness - Produkte sind recyclebar. Führen Sie das Gerät am Ende der Nutzungsdauer einer sachgerechten Entsorgung zu (örtliche Sammelstelle).

GB: Waste Disposal

Vision Fitness / Horizon Fitness / TEMPO Fitness / TREO Fitness products are recyclable. At the end of its useful life please dispose of this article correctly and safely (local refuse sites).

F: Remarque relative à la gestion des déchets

Les produits Vision Fitness / Horizon Fitness / TEMPO Fitness / TREO Fitness sont recyclables. A la fin de sa durée d'utilisation, remettez l'appareil à un centre de gestion de déchets correct (collecte locale).

NL: Verwijderingsaanwijzing

Vision Fitness / Horizon Fitness / TEMPO Fitness / TREO Fitness producten zijn recycleerbaar. Breng het apparaat aan het einde van de gebruiksduur naar een op recycling gespecialiseerd bedrijf (plaatselijk verzamelpunt).

E: Informaciones para la evacuación

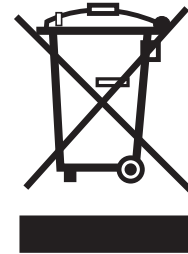
Los productos de Vision Fitness / Horizon Fitness / TEMPO Fitness / TREO Fitness son reciclables. Cuando se termina la vida útil de un aparato o una máquina, entréguelos a una empresa local de eliminación de residuos para su reciclaje.

I: Indicazione sullo smaltimento

I prodotti Vision Fitness / Horizon Fitness / TEMPO Fitness / TREO Fitness sono riciclabili. Quando l'apparecchio non servirà più, portatelo in un apposito punto di raccolta della Vostra città (Punti di raccolta comunali).

PL: Wskazówka dotycząca usuwania odpadów.

Produkty firmy Vision Fitness / Horizon Fitness / TEMPO Fitness / TREO Fitness podlegają recyklingowi. Pod koniec okresu o'bywalno'ci pros'z oddac urządzenie do właściwego punktu usuwania odpadów (lokalny punkt zbiorczy).





EXERCISE BIKE OWNER'S MANUAL

Paros & Paros Pro Owner's Manual 0628'12 Rev. 1.4 © 2012 Horizon Fitness