

ELLIPTICAL OWNER'S MANUAL



Read the ELLIPTICAL GUIDE before using this OWNER'S MANUAL.

ASSEMBLY



WARNING

There are several areas during the assembly process that special attention must be paid. It is very important to follow the assembly instructions correctly and to make sure all parts are firmly tightened. If the assembly instructions are not followed correctly, the elliptical could have frame parts that are not tightened and will seem loose and may cause irritating noises. To prevent damage to the elliptical, the assembly instructions must be reviewed and corrective actions should be taken.

Before proceeding, find your elliptical's serial number located on the front stabilizer tube and enter it in the space provided below. Also locate the model name which is next to the serial number.

ENTER YOUR SERIAL NUMBER AND MODEL NAME IN THE BOXES BELOW:

SERIAL NUMBER:

--	--	--	--	--	--	--	--	--	--	--	--	--	--	--	--

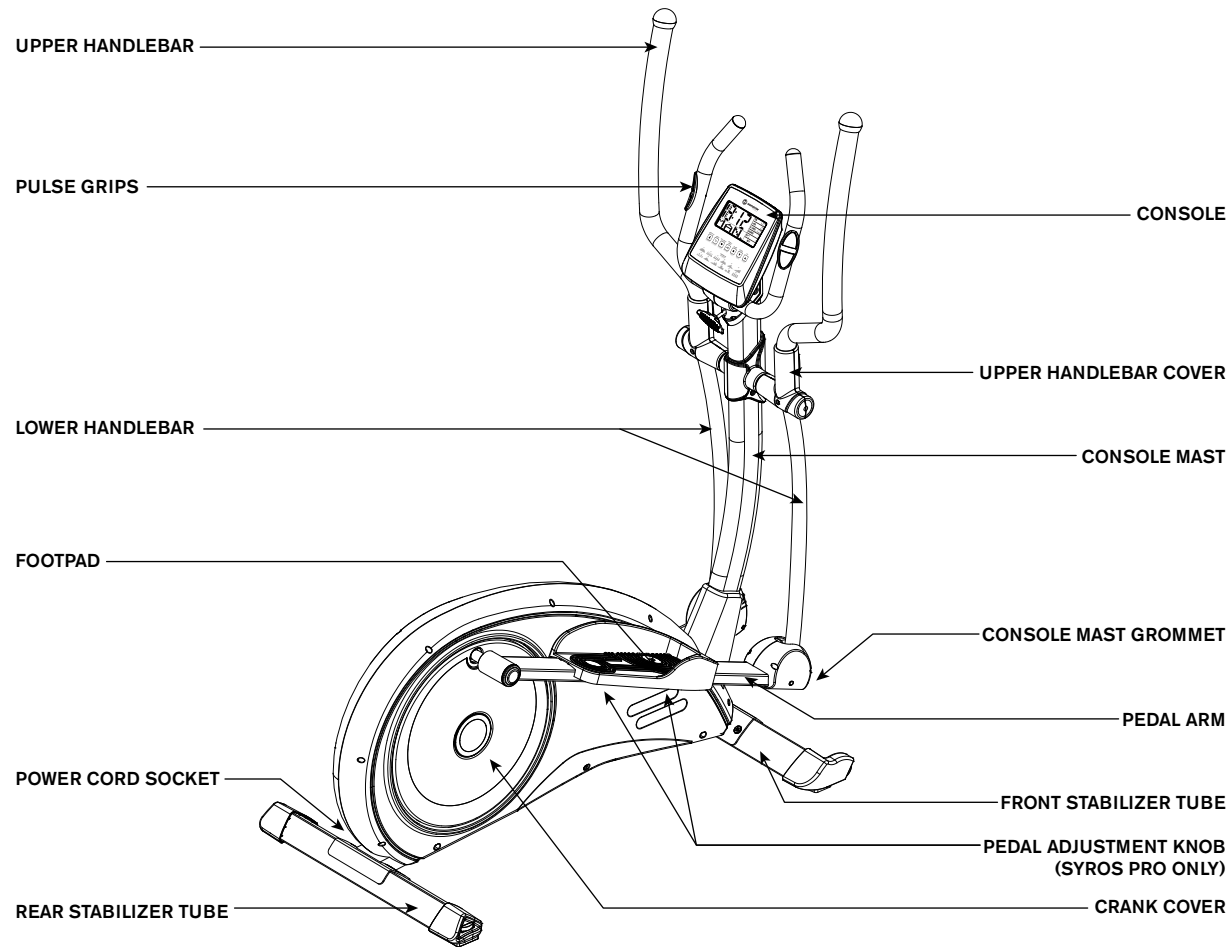
MODEL NAME: **HORIZON**

--	--	--	--	--	--	--	--	--	--	--	--	--	--	--

ELLIPTICAL



SYROS PRO
SHOWN



SYROS PRO

TOOLS INCLUDED:

- ☐ 5mm L Wrench
- ☐ Flat Wrench

PARTS PACKING INCLUDED:

- ☐ 1 Main Frame
- ☐ 1 Front Stabilizer Tube
- ☐ 1 Rear Stabilizer Tube
- ☐ 1 Console
- ☐ 1 Console Mast
- ☐ 1 Console Mast Grommet
- ☐ 2 Upper Handlebars
- ☐ 2 Lower Handlebars
- ☐ 2 Upper Handlebar Covers
- ☐ 2 Pedals
- ☐ 2 Pedal Arms
- ☐ 1 Power Cord
- ☐ 1 Hardware Kit

PRE ASSEMBLY

UNPACKING

Unpack the product where you will be using it. Place the elliptical carton on a level flat surface. It is recommended that you place a protective covering on your floor. Never open box when it is on its side.

NOTE: During each assembly step, ensure that ALL nuts and bolts are in place and partially threaded in before completely tightening any ONE bolt.

NOTE: A light application of grease may aid in the installation of hardware. Any grease, such as lithium bike grease is recommended.



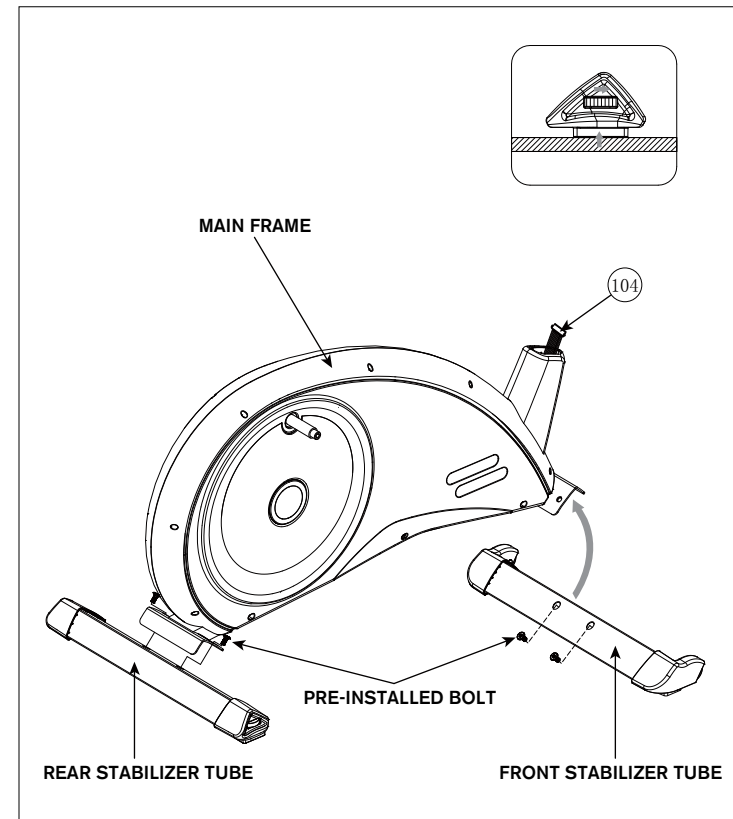
NEED HELP?

If you have questions or if there are any missing parts, contact your local dealer.



SYROS
SYROS PRO

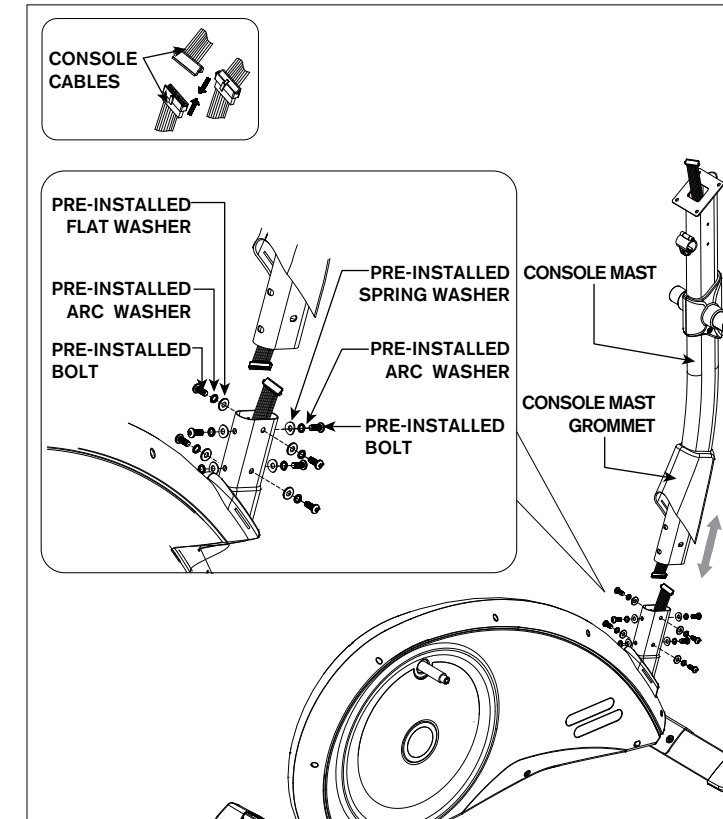
ASSEMBLY STEP 1



NOTE: There is no hardware for this step.

- A Attach the **REAR STABILIZER TUBE** to **MAIN FRAME** using 2 **PRE-INSTALLED BOLTS**.
- B Attach the **FRONT STABILIZER TUBE** to **MAIN FRAME** using 2 **PRE-INSTALLED BOLTS**.

ASSEMBLY STEP 2

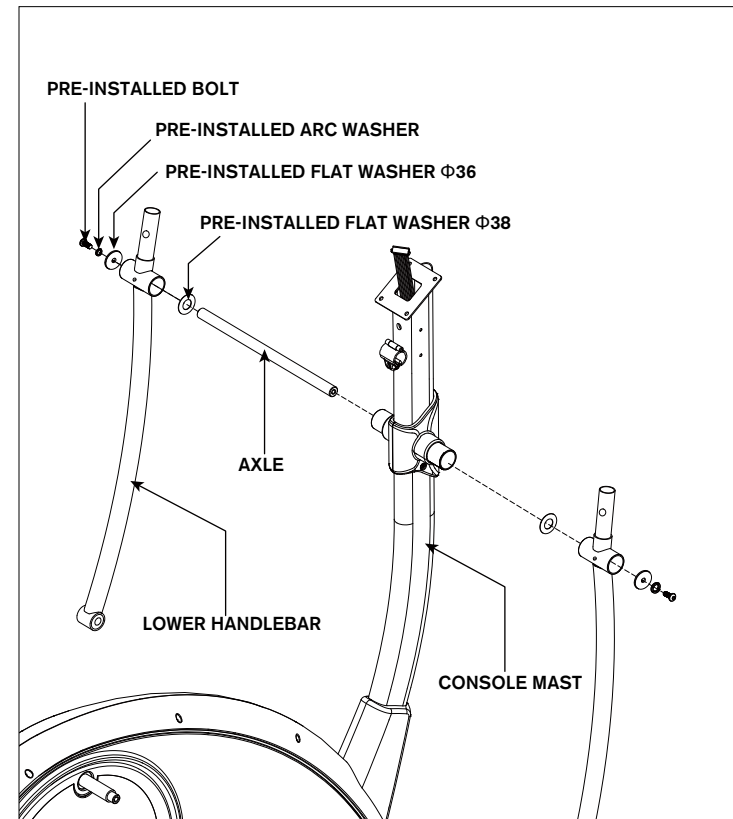


NOTE: There is no hardware for this step.

- A Slide **CONSOLE MAST GROMMET** from bottom up the **CONSOLE MAST**.
- B Attach **CONSOLE CABLES** and tuck cables into **MAIN FRAME** carefully.
- C Slide **CONSOLE MAST** into **MAIN FRAME** using 4 **PRE-INSTALLED BOLTS**, 4 **PRE-INSTALLED ARC WASHERS**, 4 **PRE-INSTALLED FLAT WASHERS** from left & right sides and 4 **PRE-INSTALLED BOLTS**, 4 **PRE-INSTALLED ARC WASHERS**, 4 **PRE-INSTALLED SPRING WASHERS** from front & rear sides.

NOTE: Be careful not to pinch any wires while attaching the console mast.

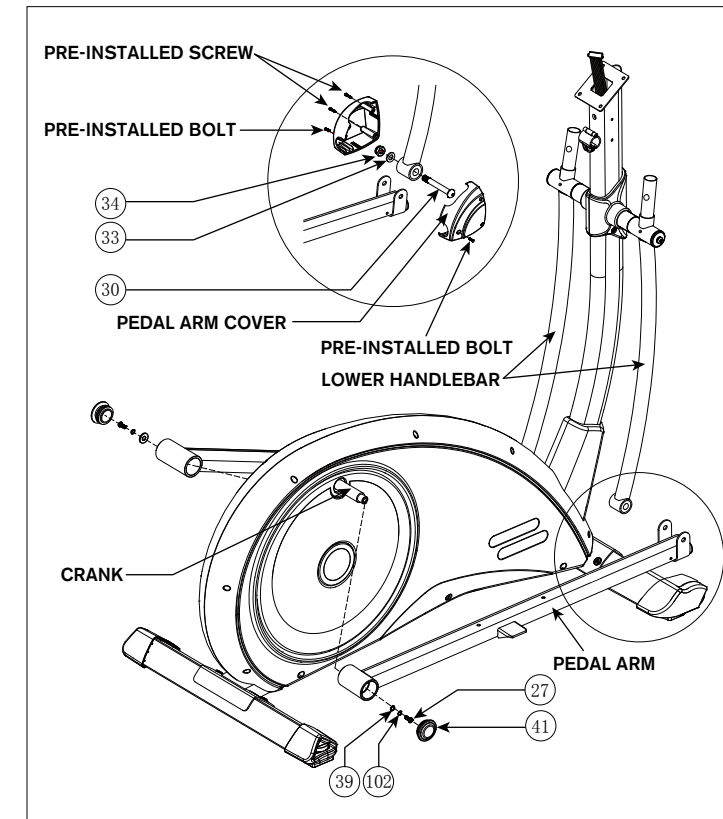
ASSEMBLY STEP 3



NOTE: There is no hardware for this step.

- Slide **AXLE** through **CONSOLE MAST** carefully.
- Attach the **LOWER HANDLEBAR** to **CONSOLE MAST** using 1 **PRE-INSTALLED BOLT**, 1 **PRE-INSTALLED ARC WASHER**, 1 **PRE-INSTALLED FLAT WASHER Φ36** & 1 **PRE-INSTALLED WASHER Φ38**.
- Repeat steps **B** on the opposite side.

ASSEMBLY STEP 4



HARDWARE PARTS:

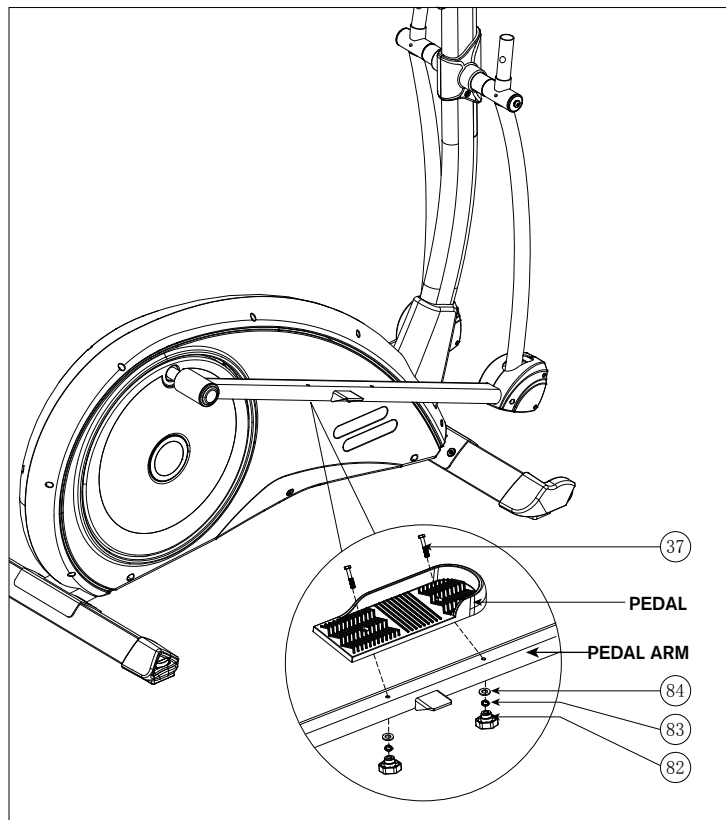
- | | | |
|-----------------------------------------|----------------------------------------------------|-----------------------------------------------------|
| BOLT (27)
M8 x 20
Qty: 2 | BOLT (30)
M10 x 78
Qty: 2 | FLAT WASHER (33)
Φ10 x Φ19 x 2T
Qty: 2 |
| NUT (34)
M10
Qty: 2 | FLAT WASHER (39)
Φ8 x Φ21 x 2T
Qty: 2 | END CAP (41)
Qty: 2 |
| ARC WASHER (102)
Φ8
Qty: 2 | | |

- Slide **PEDAL ARM** to **CRANK** using 1 **FLAT WASHER (39)**, 1 **ARC WASHER (102)**, 1 **BOLT(27)** & 1 **END CAP (41)**.
- Align opposite end of **PEDAL ARM** on the bottom of **LOWER HANDLEBAR**, secure the joint with 1 **BOLT (30)**, 1 **FLAT WASHER (33)** and 1 **NUT(34)**.
- Attach the **PEDAL ARM COVER** from both side of **PEDAL ARM** using 2 **PRE-INSTALLED BOLTS** and 2 **PRE-INSTALLED SCREWS**.
- Repeat steps **A-C** on the opposite side.

ASSEMBLY STEP 5 (SYROS)



SYROS
SHOWN



HARDWARE PARTS:

BOLT (37)
M8 x 55
Qty: 4

PEDAL KNOB (82)
M8
Qty: 4

SPRING WASHER (83)
Ø8
Qty: 4

FLAT WASHER (84)
Ø8 x Ø16 x 2T
Qty: 4

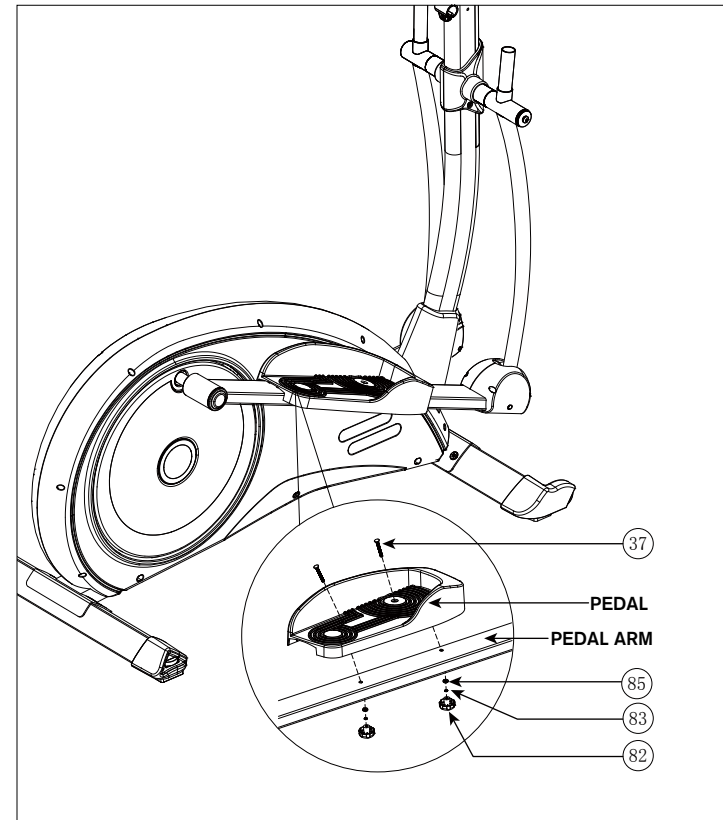
A Attach the **PEDAL** to **PEDAL ARM** using 2 **BOLTS (37)**, 2 **FLAT WASHERS (84)**, 2 **SPRING WASHERS (83)** and 2 **PEDAL KNOBS (82)**.

B Repeat on the opposite side.

ASSEMBLY STEP 5 (SYROS PRO)



SYROS PRO
SHOWN



HARDWARE PARTS:

PEDAL ADJUSTMENT KNOB (82)
Qty: 4

ARC WASHER (83)
Ø6
Qty: 4

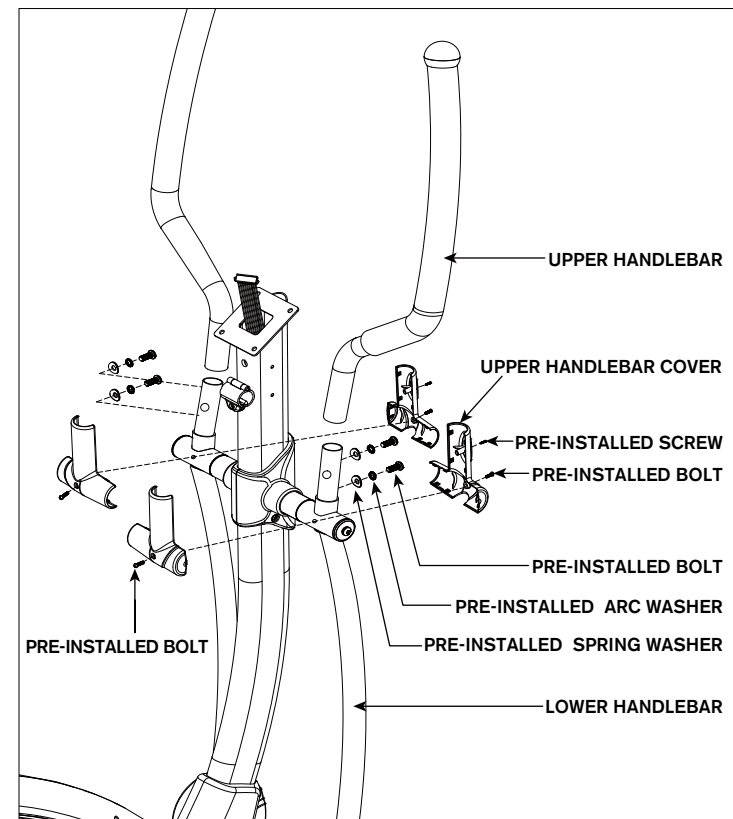
BOLT (37)
M6 x 55
Qty: 4

FLAT WASHER (85)
Ø6x16x2T
Qty: 4

A Attach the **PEDAL** to **PEDAL ARM** using 2 **BOLTS (37)**, 2 **FLAT WASHERS (85)**, 2 **ARC WASHERS (83)** and 2 **PEDAL ADJUSTMENT KNOBS**.

B Repeat on the opposite side.

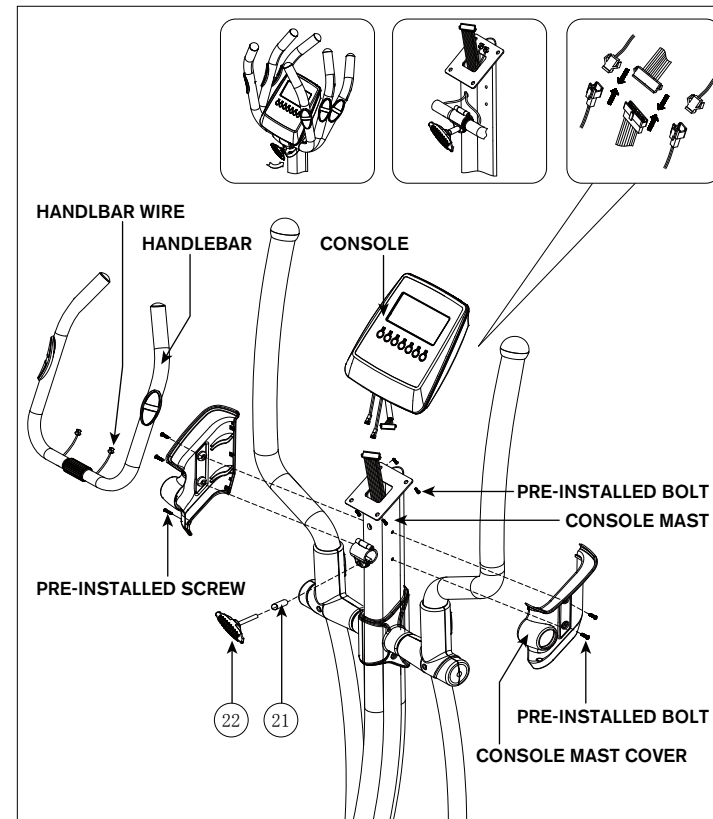
ASSEMBLY STEP 6



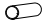
NOTE: There is no hardware for this step.


- Slide **UPPER HANDLEBAR** onto **LOWER HANDLEBAR** and secure using 1 **PRE-INSTALLED BOLT**, 1 **PRE-INSTALLED ARC WASHER** and 1 **PRE-INSTALLED SPRING WASHER**.
- Attach the **HANDLEBAR COVERS** from front side using 1 **PRE-INSTALLED SCREW** and 1 **PRE-INSTALLED BOLT** and rear side using 1 **PRE-INSTALLED BOLT**.
- Repeat **A-B** on the other side.

ASSEMBLY STEP 7



HARDWARE PARTS:

 **BUSHING (21)**
Ø8 x Ø13 x 35mm
Qty: 1

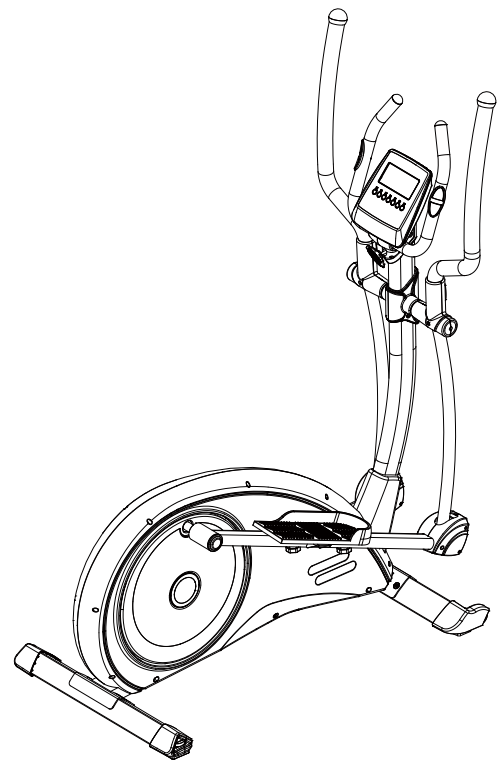
 **T KNOB (22)**
M8 x 55mm
Qty: 1

- Feed the **HANDLEBAR WIRES** through the hole in the **CONSOLE MAST** and out the top of the **CONSOLE MAST**.
- Attach the **HANDLEBAR** to **CONSOLE MAST** using 1 **BUSHING (21)** and 1 **T KNOB (22)**.
- Connect the **CONSOLE CABLES** and carefully tuck the **CONSOLE CABLES** into the **CONSOLE MAST**.
- Attach the **CONSOLE** to the **CONSOLE MAST** using 4 **PRE-INSTALLED BOLTS**.
- Attach the **LEFT & RIGHT CONSOLE MAST COVERS** to the **CONSOLE MAST** using 4 **PRE-INSTALLED BOLTS** and 1 **PRE-INSTALLED SCREW**.
- Plug in **POWER ADAPTER**.

NOTE: Be careful not to pinch any wires while attaching the console.



SYROS
SHOWN



ASSEMBLY COMPLETE!

SYROS

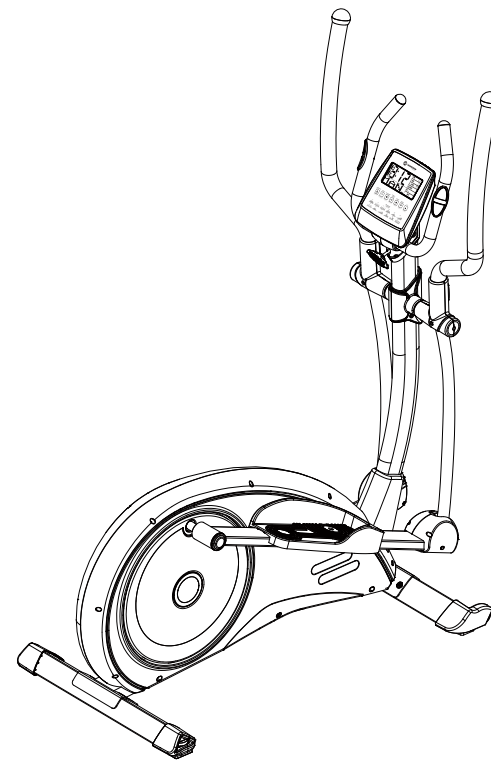
Max. User Weight: 136 kg / 300 lbs

Product Weight: 48.5 kg / 107 lbs

Overall Dimensions: 145x60x160 cm / 57"x24"x63"



SYROS PRO
SHOWN



SYROS PRO

Max. User Weight: 136kg / 300 lbs

Product Weight: 49.5kg / 109lbs

Overall Dimensions: 145x60x160cm / 57"x24"x63"

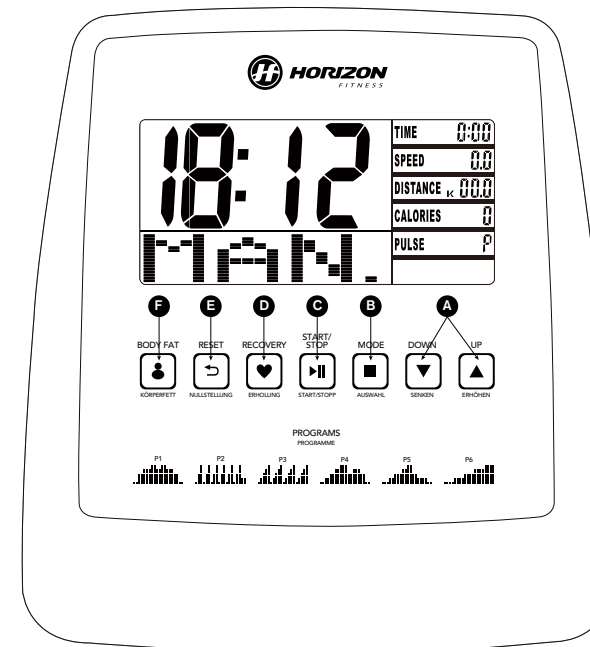


ELLIPTICAL OPERATION

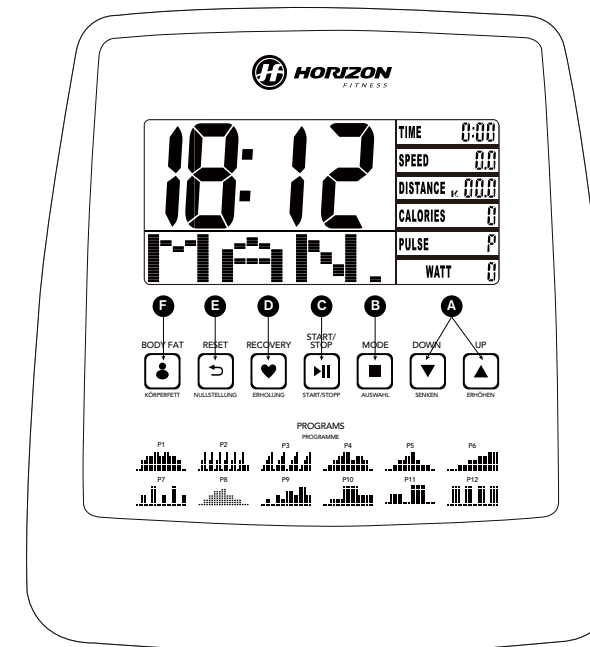
This section explains how to use your elliptical's console and programming.
The BASIC OPERATION section in the ELLIPTICAL GUIDE has instructions for the following:

- LOCATION OF THE ELLIPTICAL
- FOOT POSITIONING
- MOVING THE ELLIPTICAL
- LEVELING THE ELLIPTICAL
- POWER/MANUAL INCLINE OPERATION
- USING THE HEART RATE FUNCTION

SYROS CONSOLE DISPLAY



SYROS PRO CONSOLE DISPLAY



SYROS
SYROS PRO



SYROS & SYROS PRO CONSOLE OPERATION

A) UP/DOWN KEY

- 1) Press to increase and decrease the value.
- 2) Press to scroll and browse items which you can select.
- 3) Press to increase and decrease the resistance.

B) MODE KEY

- 1) Changing display and confirm data setting .
- 2) After Body Fat testing press Mode key to change display.

C) START/STOP KEY

To start and pause a workout.

D) RECOVERY KEY

If heart rate data is available, you can press Recovery key to start the Recovery function.(Refer to Recovery operation on page 19 for more information)

E) RESET KEY

When data setting, press Reset key to default value.

Hold the Reset key for 3 seconds to reset the system at anytime during workout.

F) BODY FAT

For evaluating body fat and BMI index. (Refer to page 19 for more operation information)

SETUP YOUR PERSONAL DATA

This console is able to store your personal data which includes name, gender, age and weight. This allows you to start your workout more quickly. To set up your data, please follow the procedure as below,

- 1) Select user from 1 to 4
- 2) Select your gender
- 3) Select your age
- 4) Select your weight
- 5) The console is able to store up to 4 users' data and you may modify your setting before your daily workouts.

START YOUR WORKOUT

- 1) Make sure the power is on.
- 2) Press Mode key to enter main menu after finish user setting.
- 3) Press Up/Down key to select workout in main menu, then press mode key to confirm.
- 4) To choose preset programs please select program and press mode key.
- 5) After workout selection, press Up/Down key to set the workout time.
- 6) Press Start key to start the workout.

QUICK START

- 1) Make sure the power is on.
- 2) Simply press the "START" key and begin exercising.

MANUAL

Select manual at main menu and press start before workout selection.

HRC

- 1) finish personal data setting and enter main menu.
- 2) select HRC program at main menu and press mode key to enter setting.
- 3) select among 55%, 75% and 90% target or choose H.R.C. Target to set your desired number between 30 to 230.

USER PROGRAM

- 1) select User program at main menu and use up/down and mode key to set your own workout.
- 2) press mode key for 3 seconds for confirming setting

WORKOUT RECOVERY

After exercising for a period of time (more than 30 seconds), Press RECOVERY key, hold onto the handgrips to conduct a workout recovery test.

TIME will count down from 00:60 to 00:00 and then show your heart rate recovery status from F1,F2...to F6.

(F1-F6 stands for your Fitness quotient, with F1 being the best result)

User may keep exercising to improve the heart rate recovery status. (Press the RECOVERY button again to return the main display)

BODY FAT MEASUREMENT

- 1) Select User from U1 - U4 & workout then press START key.

- 2) After the selected workout is finished or stopped, press BODY FAT button to enter.
- 3) Holding both pulse grips for 8-10 seconds then test results (percentage and BMI rate) will be displayed on LCD for 30 seconds.

B.M.I. (Body mass index) integrated

B.M.I	LOW	LOW/MED	MEDIUM	MED/HIGH
RANGE	<20	20-24	24.1-26.5	>26.5

BODY FAT:

FAT%	(-) LOW	(+) LOW/MED	▲ MEDIUM	◆ MED/HIGH
MALE	<13%	13%-25.9%	26%-30%	>30%
FEMALE	<23%	23%-35.9%	36%-40%	>40%

WATTS CONTROL (SYROS PRO ONLY)

- 1) Finish user setting and enter workout selection.
- 2) Select Watts control program at main menu and press mode key.
- 3) Set target watt value by using up/down key.
- 4) Press start after finish setting.

ENERGY SAVER

To minimize energy consumption, your machine will enter energy saver mode automatically when not in use for 4 minutes and could be quickly activated again with a touch of a button.

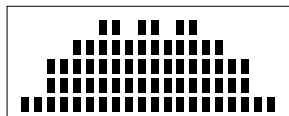
CALENDAR AND TIME

While powering on, this console will allow you set the CALENDAR and TIME by using UP & DOWN keys and MODE key to confirm.

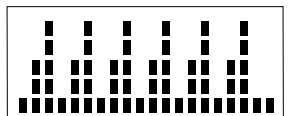


SYROS & SYROS PRO PRESET PROGRAM PROFILES

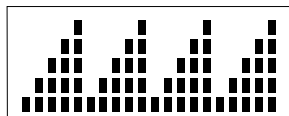
- **P1:** Promotes weight loss by raising and lowering the resistance level, while keeping you in your fat burning zone.



- **P2:** Improves your strength, speed, and endurance by raising and lowering the resistance levels throughout your workout to involve both your heart and muscles.



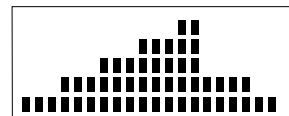
- **P3:** Challenges with various combinations of hills and valleys (resistance) to burn more fat when exercising.



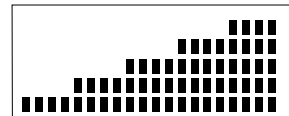
- **P4:** Improves performance and stamina by raising the resistance level to high peaks to simulate the most difficult outdoor terrains.



- **P5:** Complete exercise program to help you enhance body performance.

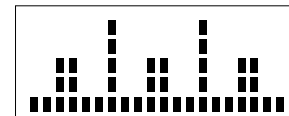


- **P6:** Increasing resistance for advanced users to tones your muscles, and challenges yourself.

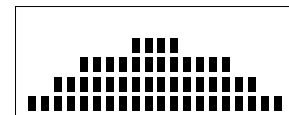


PRESET PROGRAM PROFILES(SYROS PRO ONLY)

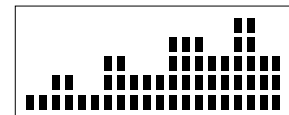
- **P7:** Recover your heart and muscles after intensive workout.



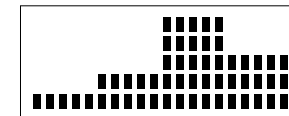
- **P8:** Simulates plateau hiking by increasing and decreasing the resistance gradually.



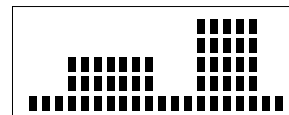
- **P9:** Gradually increasing resistance with hills and valleys allows user to reach their daily target.



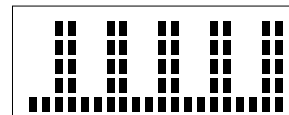
- **P10:** Improves performance and stamina by raising the resistance level to high peaks to simulate the hill environment.



- **P11:** Improve heart and lung capacity by simulates daily jogging.



- **P12:** Improves your strength, speed and endurance by automatically changing the resistance levels throughout your workout.



MONITORING YOUR HEART RATE

FEEDBACK

Your Horizon Fitness elliptical trainer offers two heart rate feedback options. You may choose to use the heart rate handlebars, or the chest transmitter (sold separately) for a hands free workout.

HEART RATE HANDLEBAR

Place the palm of your hands directly on the heart rate handlebars. Both hands must grip the bars for your heart rate to register. When gripping the handlebars, do not grip tightly. Holding the grips tightly may elevate your blood pressure. Try to maintain moderate pressure while holding onto the heart rate handlebars. It is recommended that you hold the handlebars only long enough to see your heart rate readout on the console. You may experience an erratic readout if consistently holding the handlebars.

TELEMETRIC CHEST TRANSMITTER (SOLD SEPARATELY)

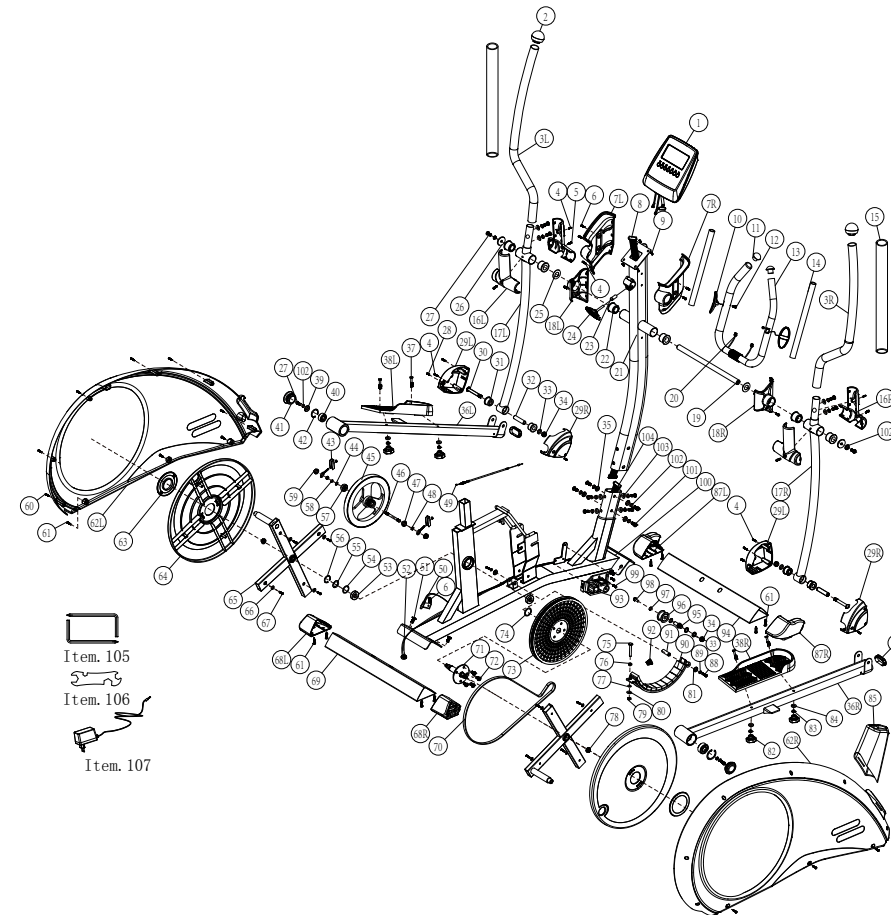
Prior to wearing the chest transmitter on your chest, moisten the two rubber electrodes with water. Center the chest strap just below the breast or pectoral muscles, directly over your sternum, with the logo facing out. NOTE: The chest strap must be tight and properly placed to receive an accurate and consistent readout. If the chest strap is too loose, or positioned improperly, you may receive an erratic or inconsistent heart rate readout.

If you have any problems with the heart rate function please refer to pages 10, 11 and 24 in the elliptical guide.

WARNING!

The heart rate function is not a medical device. Various factors may affect the accuracy of your heart rate reading. The heart rate reading is intended only as an exercise aid.

SYROS EXPLODED VIEW



SYROS PARTS LIST

NO.	DESCRIPTION	QTY
1	COMPUTER	1
2	END CAP FOR UPPER HANDLEBAR	2
3L	UPPER HANDLEBAR (LEFT)	1
3R	UPPER HANDLEBAR (RIGHT)	1
4	SELF-TAPPING SCREW M4X15	7
5	ROUND M5X10 SCREW	4
6	SCREW M5X12	7
7L	PLASTIC COVER FOR LEFT HANDLEBAR	1
7R	PLASTIC COVER FOR RIGHT HANDLEBAR	1
8	UPPER COMPUTER CABLE	1
9	SCREW M5X12	4
10	HANDLE PULSE CABLE WITH PADS	1 SET
11	PLASTIC END CAP	2
12	SELF TAPPING SCREW M3.5X20	2
13	HANDLEBAR	1
14	HANDLEBAR FOAM	2
15	UPPER HANDLEBAR FOAM	2
16L	PLASTIC COVER FOR LEFT UPPER HANDLEBAR	1 SET
16R	PLASTIC COVER FOR RIGHT UPPER HANDLEBAR	1 SET
17L	LOWER HANDLEBAR (LEFT)	1
17R	LOWER HANDLEBAR (RIGHT)	1
18L	PLASTIC COVER FOR HANDLEBAR POST CENTER (LEFT)	1
18R	PLASTIC COVER FOR HANDLEBAR POST CENTER (RIGHT)	1
19	ROTATION ROD	1
20	HAND PULSE CABLE	1

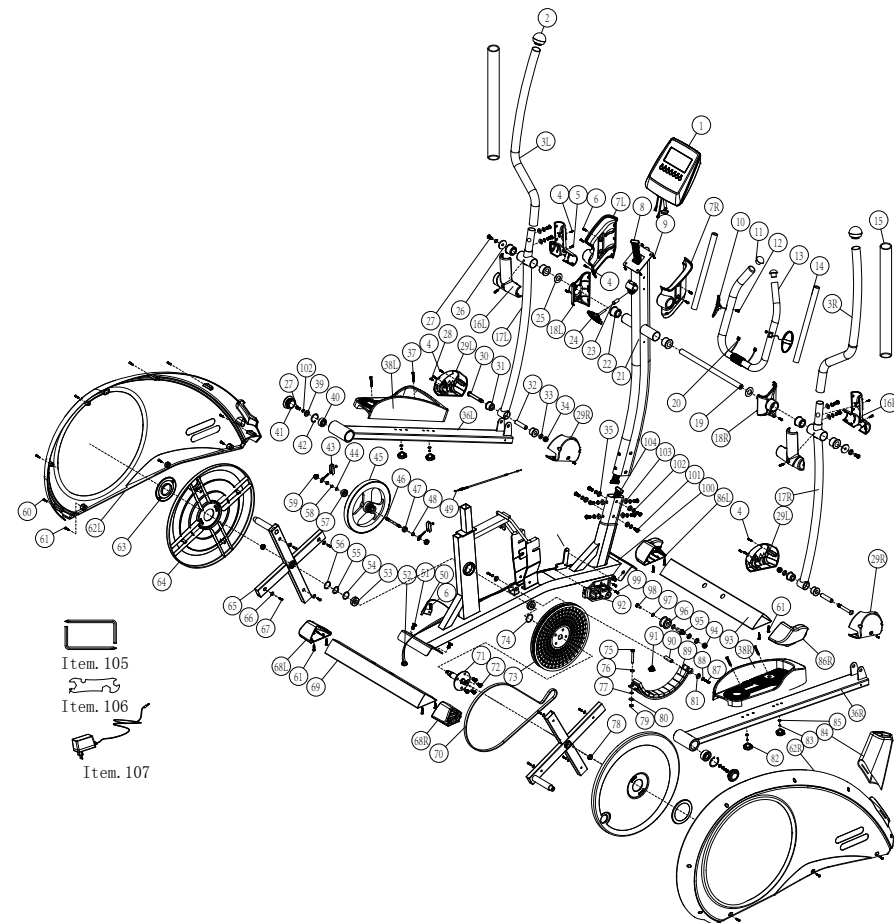
NO.	DESCRIPTION	QTY
21	HANDLEBAR POST	1
22	HANDLEBAR PIVOT BUSHES Φ19X38	6
23	TUBE SPACER	1
24	"T" SHAPE SCREW	1
25	FLAT WASHER Φ19.5XΦ38X0.5MM	2
26	FLAT WASHER Φ8.5XΦ36XMM3T	2
27	M8*20 ALLEN BOLT	4
28	M5*15 ROUND HEAD SCREW	4
29L	PLASTIC COVER FOR FOOR SUPPORT BAR (LEFT)	2
29R	PLASTIC COVER FOR FOOR SUPPORT BAR (RIGHT)	2
30	ALLEN BOLT M10X78	2
31	HANDLEBAR LOWER PIVOT BUSHES 32x14	4
32	TUBE SPACER Φ14X59.5MM	2
33	FLAT WASHER 10X19X2	4
34	M10 NYLON LOCK NUT	2
35	FLAT WASHER 8X19X1.5T	4
36L	FOOT SUPPORT BAR (LEFT)	1
36R	FOOT SUPPORT BAR (RIGHT)	1
37	CARRIAGE BOLT M8x55	4
38L	FOOTPLATE (LEFT)	1
38R	FOOTPLATE (RIGHT)	1
39	FLAT WASHER 8X21X2T	2
40	BEARING	2
41	END CAP	2
42	C-SHAPE WASHER Φ43.5	2

NO.	DESCRIPTION	QTY
43	BELT ADJUSTMENT SET	2
44	WAVE WASHER Φ10XΦ15X0.3T	2
45	FLYWHEEL	1
46	AXLE FOR FLYWHEEL Φ10X110MM	1
47	BEARING	1
48	HEX NUT M10X1.25X4T MM	2
49	CABLE	1
50	SENSOR	1
51	FLAT-HEADED BOLT M8X20MM	4
52	MAIN ADAPTOR SOCKET & LEAD	1
53	BEARING	2
54	WASHER Φ20X25X1T	1
55	WAVE WASHER Φ20.5X25X0.5T	1
56	C-SHAPE WASHER Φ20	1
57	BEARING	1
58	C-SHAPE WASHER Φ9	1
59	NUT M10X1.25	2
60	SELF-TAPPING SCREW M4.5X25MM	6
61	DRILLING SCREW M5X15MM	14
62L	CHAIN COVER LEFT	1
62R	CHAIN COVER RIGHT	1
63	PLASTIC COVER	2
64	ROUND COVER	2
65	CRANK	2
66	WASHER Φ5X16X1	8

NO.	DESCRIPTION	QTY
67	SCREW M4X15MM	8
68L	REAR END CAP (LEFT)	1
68R	REAR END CAP (RIGHT)	1
69	REAR STABILIZER	1
70	BELT 460J6	1
71	AXLE Φ20X130MM	1
72	ANTI-LOOSE ALLEN BOLT M8X15MM	4
73	BELT WHEEL	1
74	WASHER Φ20X25X2T	1
75	HEX BOLT M6X75	1
76	NUT M6	1
77	PLASTIC WASHER Φ6.5XΦ25X1.5T	1
78	NUT M10X1.25	2
79	NUT M6	1
80	WASHER Φ6.5X19X1.5T	1
81	WASHER Φ6.5X13X1.5T	2
82	KNOB M8	4
83	SPRING WASHER Φ8	4
84	WASHER BLACK 8*16*2	4
85	FRONT PLASTIC COVER	1
86	FOOT SUPPORT BAR CAP	2
87L	FRONT END CAP (LEFT)	1
87R	FRONT END CAP (RIGHT)	1
88	HEX BOLT M6X16	2
89	SPRING WASHER Φ6	2

NO.	DESCRIPTION	QTY
90	MAGNET SET	1
91	AXLE FOR MAGNET SET	1
92	SPRING $\Phi 15 \times \Phi 9 \times \Phi 1 \times 52$	1
93	MOTOR	1
94	FRONT STABILIZER	1
95	IDLER AXLE $\Phi 10 \times 41.5 \text{MM}$	1
96	IDLER	1
97	WASHER $6 \times 13 \times 1 \text{MM}$	1
98	HEX SCREW M6X12	1
99	SCREW M5X15	3
100	MAIN FRAME	1
101	ALLEN BOLT M8X20	12
102	SPRING WASHER $\Phi 8$	16
103	WAVE WASHER $\Phi 8 \times \Phi 19 \times 1.5 \text{T}$	8
104	LOWER COMPUTER CABLE	1
105	ALLEN KEY WRENCH	2
106	COMBINATION WRENCH	1
107	ADAPTOR	1

SYROS PRO EXPLODED VIEW



SYROS PRO PARTS LIST

NO.	DESCRIPTION	QTY
1	COMPUTER	1
2	END CAP FOR UPPER HANDLEBAR	2
3L	UPPER HANDLEBAR (LEFT)	1
3R	UPPER HANDLEBAR (RIGHT)	1
4	SELF-TAPPING SCREW M4X15	7
5	ROUND M5X10 SCREW	4
6	SCREW M5X12	7
7L	PLASTIC COVER FOR LEFT HANDLEBAR	1
7R	PLASTIC COVER FOR RIGHT HANDLEBAR	1
8	UPPER COMPUTER CABLE	1
9	SCREW M5X12	4
10	HANDLE PULSE CABLE WITH PADS	1 SET
11	PLASTIC END CAP	2
12	SELF TAPPING SCREW M3.5X20	2
13	HANDLEBAR	1
14	HANDLEBAR FOAM	2
15	UPPER HANDLEBAR FOAM	2
16L	PLASTIC COVER FOR LEFT UPPER HANDLEBAR	1 SET
16R	PLASTIC COVER FOR RIGHT UPPER HANDLEBAR	1 SET
17L	LOWER HANDLEBAR (LEFT)	1
17R	LOWER HANDLEBAR (RIGHT)	1
18L	PLASTIC COVER FOR HANDLEBAR POST CENTER (LEFT)	1
18R	PLASTIC COVER FOR HANDLEBAR POST CENTER (RIGHT)	1
19	ROTATION ROD	1
20	HAND PULSE CABLE	1

NO.	DESCRIPTION	QTY
21	HANDLEBAR POST	1
22	HANDLEBAR PIVOT BUSHES Φ19X38	6
23	TUBE SPACER	1
24	"T" SHAPE SCREW	1
25	FLAT WASHER Φ19.5XΦ38X0.5MM	2
26	FLAT WASHER Φ8.5XΦ36XMM3T	2
27	M8X20 ALLEN BOLT	4
28	M5X15 ROUND HEAD SCREW	4
29L	PLASTIC COVER FOR FOOT SUPPORT BAR (LEFT)	2
29R	PLASTIC COVER FOR FOOT SUPPORT BAR (RIGHT)	2
30	ALLEN BOLT M10X60	2
31	HANDLEBAR LOWER PIVOT BUSHES 32X14	4
32	TUBE SPACER Φ14X42.3MM	2
33	FLAT WASHER 10X19X2	4
34	M10 NYLON LOCK NUT	2
35	FLAT WASHER 8X19X1.5T	4
36L	FOOT SUPPORT BAR (LEFT)	1
36R	FOOT SUPPORT BAR (RIGHT)	1
37	CARRIAGE BOLT M6X55	4
38L	FOOTPLATE (LEFT)	1
38R	FOOTPLATE (RIGHT)	1
39	FLAT WASHER 8X21X2T	2
40	BEARING	2
41	END CAP	2
42	C-SHAPE WASHER Φ43.5	2

NO.	DESCRIPTION	QTY
43	BELT ADJUSTMENT SET	2
44	WAVE WASHER Φ10XΦ15X0.3T	2
45	FLYWHEEL	1
46	AXLE FOR FLYWHEEL Φ10X110MM	1
47	BEARING	1
48	HEX NUT M10X1.25X4T MM	2
49	CABLE	1
50	SENSOR	1
51	FLAT-HEADED BOLT M8X20MM	4
52	MAIN ADAPTOR SOCKET & LEAD	1
53	BEARING	2
54	WASHER Φ20X25X1T	1
55	WAVE WASHER Φ20.5X25X0.5T	1
56	C-SHAPE WASHER Φ20	1
57	BEARING	1
58	C-SHAPE WASHER Φ9	1
59	NUT M10X1.25	2
60	SELF-TAPPING SCREW M4.5X25MM	6
61	DRILLING SCREW M5X15MM	14
62L	CHAIN COVER LEFT	1
62R	CHAIN COVER RIGHT	1
63	PLASTIC COVER	2
64	ROUND COVER	2
65	CRANK	2
66	WASHER Φ5X16X1	8

NO.	DESCRIPTION	QTY
67	SCREW M4X15MM	8
68L	REAR END CAP (LEFT)	1
68R	REAR END CAP (RIGHT)	1
69	REAR STABILIZER	1
70	BELT 460J6	1
71	AXLE Φ20X130MM	1
72	ANTI-LOOSE ALLEN BOLT M8X15MM	4
73	BELT WHEEL	1
74	WASHER Φ20X25X2T	1
75	HEX BOLT M6X75	1
76	NUT M6	1
77	PLASTIC WASHER Φ6.5XΦ25X1.5T	1
78	NUT M10X1.25	2
79	NUT M6	1
80	WASHER Φ6.5X19X1.5T	1
81	WASHER Φ6.5X13X1.5T	2
82	KNOB M6	4
83	SPRING WASHER Φ6	6
84	FRONT PLASTIC COVER	1
85	WASHER Φ6X16X2T	4
86L	FRONT END CAP (LEFT)	1
86R	FRONT END CAP (RIGHT)	1
87	HEX BOLT M6X16	2
88	SPRING WASHER Φ6	2
89	MAGNET SET	1

NO.	DESCRIPTION	QTY
90	AXLE FOR MAGNET SET	1
91	SPRING Φ15XΦ9XΦ1X52	1
92	MOTOR	1
93	FRONT STABILIZER	1
94	NUT M10	1
95	IDLER AXLE Φ10X41.5MM	1
96	IDLER	1
97	WASHER 6X13X1MM	1
98	HEX SCREW M6X12	1
99	SCREW M5X15	3
100	MAIN FRAME	1
101	ALLEN BOLT M8X20	12
102	SPRING WASHER Φ8	16
103	WAVE WASHER Φ8XΦ19X1.5T	8
104	LOWER COMPUTER CABLE	1
105	ALLEN KEY WRENCH	2
106	COMBINATION WRENCH	1
107	ADAPTOR	1

D: Entsorgungshinweis

Vision Fitness / Horizon Fitness / TEMPO Fitness / TREO Fitness - Produkte sind recyclebar. Führen Sie das Gerät am Ende der Nutzungsdauer einer sachgerechten Entsorgung zu (örtliche Sammelstelle).

GB: Waste Disposal

Vision Fitness / Horizon Fitness / TEMPO Fitness / TREO Fitness products are recyclable. At the end of its useful life please dispose of this article correctly and safely (local refuse sites).

F: Remarque relative à la gestion des déchets

Les produits Vision Fitness / Horizon Fitness / TEMPO Fitness / TREO Fitness sont recyclables. A la fin de sa durée d'utilisation, remettez l'appareil à un centre de gestion de déchets correct (collecte locale).

NL: Verwijderingsaanwijzing

Vision Fitness / Horizon Fitness / TEMPO Fitness / TREO Fitness producten zijn recycleerbaar. Breng het apparaat aan het einde van de gebruiksduur naar een op recycling gespecialiseerd bedrijf (plaatselijk verzamelpunt).

E: Informaciones para la evacuación

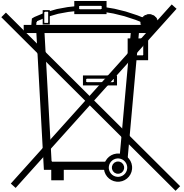
Los productos de Vision Fitness / Horizon Fitness / TEMPO Fitness / TREO Fitness son reciclables. Cuando se termina la vida útil de un aparato o una máquina, entréguelos a una empresa local de eliminación de residuos para su reciclaje.

I: Indicazione sullo smaltimento

I prodotti Vision Fitness / Horizon Fitness / TEMPO Fitness / TREO Fitness sono riciclabili. Quando l'apparecchio non servirà più, portatelo in un apposito punto di raccolta della Vostra città (Punti di raccolta comunali).

PL: Wskazówka dotycząca usuwania odpadów.

Produkty firmy Vision Fitness / Horizon Fitness / TEMPO Fitness / TREO Fitness podlegają recyklingowi. Pod koniec okresu użytkowania proszę oddać urządzenie do właściwego punktu usuwania odpadów (lokalny punkt zbiorczy).





ELLIPTICAL OWNER'S MANUAL

Syros & Syros Pro Owner's Manual 0704'12 Rev. 1.4 © 2012 Horizon Fitness